

NielsenIQ Brandbank

OREO Original Vanilla Sandwich Biscuits 154g



EAN
7622300315283

Target market(s)
GB, IE

Components

Ingredients

WHEAT Flour

Sugar

Palm Oil

Rapeseed Oil

Fat-Reduced Cocoa Powder 4,5 %

WHEAT Starch

Glucose-Fructose Syrup

Raising Agents (Potassium Carbonates, Ammonium Carbonates, Sodium Carbonates)

Salt

Emulsifiers (**SOYA** Lecithin, Sunflower Lecithin)

Flavouring

Allergy Text

MAY CONTAIN MILK.

Nutrition

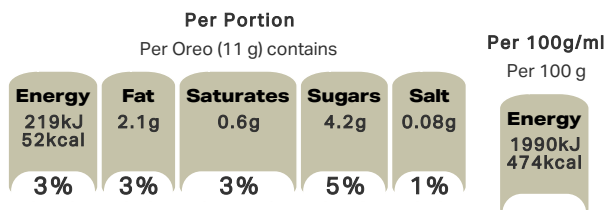
	Per 100 g	1 Oreo (11 g)	%* / 1 Oreo (11 g)
Energy	1990 kJ	219 kJ	
	474 kcal	52 kcal	3 %
Fat	19 g	2.1 g	3 %
of which Saturates	5.2 g	0.6 g	3 %
Carbohydrate	68 g	7.5 g	3 %
of which Sugars	38 g	4.2 g	5 %
Fibre	2.7 g	0.3 g	-
Protein	5.4 g	0.6 g	1 %
Salt	0.74 g	0.08 g	1 %

*Reference intake of an average adult (8400 kJ / 2000 kcal)

Calculated Nutrition

	per 100g	1 Oreo (11 g)
Energy (kJ)	1990	219
Energy (kcal)	474	52
Fat (g)	19	2.1
of which saturates (g)	5.2	0.6
Carbohydrate (g)	68	7.5
of which sugars (g)	38	4.2
Fibre (g)	2.7	0.3
Protein (g)	5.4	0.6
Salt (g)	0.74	0.08

Front of Pack Nutrition



% reference intake of an average adult (8400 kJ / 2000 kcal)

Nutrition Other Text

Reference intake of an average adult (8400 kJ / 2000 kcal)

Reference Intake Statement

Reference Intake Statement - Reference intake of an average adult (8400 kJ / 2000 kcal)

Product Description

Brand

OREO

Features

Suitable for Vegetarians

Standardised Brand

Brand - Oreo

Regulated Product Name

Chocolate Flavour Sandwich Biscuits with a Vanilla Flavour Filling (29 %).

Marketing

Company Name

Mondelez UK / Mondelez Ireland

Company Address

Freepost MDLZ,
Mondelez UK,
Uxbridge,
UB8 1DH.

Mondelez Ireland,
Malahide Road,
Coolock,
Dublin 5.

Third Party Logos

- Green Dot

Product Marketing

- Each 154g pack contains 14 cookies. 1 cookie ≈ 11g
- 52 kcal per serving (1 cookie).

Further Description

Cocoa Life
We make our cookies with cocoa, sourced through the Cocoa Life sustainability program.
www.cocoalife.org

Health & Lifestyle

Lifestyle

- Suitable for Vegetarians

Allergy Advice

Milk - May Contain
Soya - Contains
Wheat - Contains

Storage & Usage

Storage Type

Type

Ambient

Preparation and Usage

Serving Suggestion
Enjoy with Milk

Storage

Store in a Dry Place. Protect from Heat

Brandbank Captured Pack Data

Pack Size

0.34lbs e

Numeric Size

Numeric Size - 0.34

Dimension

Shelf Height (in)	Shelf Width (in)	Shelf Depth (in)
1.81	7.68	1.81

(GS1 package measurement rules)

Pack Type

Type - Wrap

Weight

Gross Weight - 0.35

New Product Development

Final Product - Not NPD

Unit Merchandising

Height - 1.81
Width - 7.68
Depth - 1.81
Unit Stackable - No
Unit Stable - Yes
Merchandise Multiple Ways - No

Shelf Ready Pack

GTIN - 07622300315276
Height - 7.13
Width - 8.98
Depth - 7.4
Weight - 5.72
Unit Count - 16
Unit Height - 0.16
Unit Width - 0.04
Unit Depth - 0.16
Merchandise Multiple Ways - No
Prototype - No
Is Case - No

Case

GTIN - 07622300315276
Height - 7.17
Width - 7.52
Depth - 9.13
Weight - 5.81
Unit Count - 16
Prototype - No

Usage Count

Number of uses - Servings

14

Usage Other Text

Portion = 14 biscuits

Customer Services

Manufacturers Address

Freepost MDLZ,
Mondelez UK,
Uxbridge,
UB8 1DH.

Mondelez Ireland,
Malahide Road,
Coolock,
Dublin 5.

Return To

Freepost MDLZ,
Mondelez UK,
Consumer Response,
Uxbridge,
UB8 1DH.

Mondelez Ireland,
Malahide Road,
Coolock,
Dublin 5.

Visit us at www.oreo.co.uk

We would love to hear from you on
0800 783 7106 (UK only)
1800 600 858 (ROI only)

Telephone Helpline

0800 783 7106 (UK)
1800 600 858 (ROI)

Web Address

www.oreo.co.uk

NUTRITION FACTS:		
	1 OREO (11g)	% * / 1 OREO (11g)
ENERGY	220 kJ	-
	476 kcal	3%
FAT	2.2g	3%
OF WHICH SATURATES	0.6g	3%
CARBOHYDRATE	7.5g	3%
OF WHICH SUGARS	4.1g	5%
FIBRE	0.3g	-
PROTEIN	0.6g	1%
SALT	0.08g	1%

*Reference intake of an average adult (8400 kJ / 2000 kcal)



The Original



Supports
sustainably
sourced cocoa



The Original







NUTRITION FACTS:

	1 OREO (11g)	% *1 OREO (11g)
ENERGY 1997 kJ 476 kcal	220 kJ 52 kcal	- 3%
FAT 20g OF WHICH SATURATES 5.4g	2.2g 0.6g	3% 3%
CARBOHYDRATE 68g OF WHICH SUGARS 38g	7.5g 4.1g	3% 5%
FIBRE 2.7g	0.3g	-
PROTEIN 5.3g	0.6g	1%
SALT 0.73g	0.08g	1%

*Reference intake of an average adult (8400 kJ / 2000 kcal)



INGREDIENTS:

WHEAT flour, sugar, palm oil, rapeseed oil, fat reduced cocoa powder 4,3 %, WHEAT starch, glucose-fructose syrup, raising agents (ammonium carbonates, potassium carbonates, sodium carbonates), salt, emulsifier (SOYA lecithins), acidity regulator (sodium hydroxide), flavouring.
MAY CONTAIN MILK.

