

NielsenIQ Brandbank

Diet Coke 330ml



EAN
40822068

Target market(s)
IE

Components

Ingredients

Carbonated Water
Colour (Caramel E150d)
Sweeteners (Aspartame, Acesulfame K)
Natural Flavourings including Caffeine
Acids (Phosphoric Acid, Citric Acid)

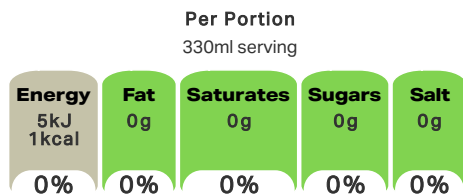
Nutrition

	Per 100ml
Energy	1.6kJ/0.4kcal
Carbohydrate:	0g
of which sugars:	0g
Salt:	0g
Fat, Saturates, Protein - negligible amount	

Calculated Nutrition

	per 100ml
Energy (kJ)	1.6
Energy (kcal)	0.4
Fat (g)	Trace
of which saturates (g)	Trace
Carbohydrate (g)	0
of which sugars (g)	0
Protein (g)	Trace
Salt (g)	0

Front of Pack Nutrition



100ml: 1.6kJ/0.4kcal

Reference intake of an average adult (8400kJ/2000kcal)

Nutrition Other Text

Fat, Saturates, Protein - negligible amount

Reference Intake Statement

Reference Intake Statement - Reference intake of an average adult (8400kJ/2000kcal)

HFSS Indicator

HFSS Indicator - Not HFSS

Product Description

Brand

Diet Coke

Features

No Calorie and Sugar

Standardised Brand

Brand - Diet Coke

Regulated Product Name

The No. 1 Cola Flavoured Soft Drink with Vegetable Extracts and Sweeteners

Marketing

Company Name

Coca-Cola HBC Northern Ireland Ltd. / Coca-Cola HBC Ireland Ltd.

Company Address

Coca-Cola HBC Northern Ireland Ltd.,
12 Lissue Road,
Lisburn,
BT28 2SZ.

Coca-Cola HBC Ireland Ltd.,
Ballycoolin,
Dublin 11.

Third Party Logos

- Green Dot

Other Information

© 2021 The Coca-Cola Company

Nutritional Claims

No Calories
No Sugar

Health & Lifestyle

Lifestyle

- No Sugar

Additives

Sweeteners - Contains

Storage & Usage

Storage Type

Type
Ambient

Preparation and Usage

Best served chilled

Storage

Best before: See side of cap or bottle neck.
Store cool and dry.

Brandbank Captured Pack Data

Pack Size

330ml ☺

Numeric Size

Numeric Size - 330

Recycling Info

Bottle - Certified as Recyclable

Packaging Material Marks

Bottle - 70 - Clear Glass

Pack Type

Type - Can

Recycling Other Text

Recycle Me
I am 100% Recyclable

Customer Supplied Pack Data

Supplied Dimension

Shelf Height (mm) (in)	Shelf Width (mm) (in)	Shelf Depth (mm) (in)
8.07	2.48	2.48

(GS1 package measurement rules)

Supplied Weight

Gross Weight (g) - 0.73

Supplied Unit Merchandising

Height - 8.07
Width - 2.48
Depth - 2.48
Unit Stable - Yes
Unit Stackable - Yes
Merchandise Multiple Ways - Yes

Supplied Case

Height - 8.19
Width - 10.2
Depth - 15.28
Weight - 17.42
Unit Count - 24
GTIN - 05449000162830

Customer Services

Manufacturers Address

Coca-Cola HBC Northern Ireland Ltd.,
12 Lissue Road,
Lisburn,
BT28 2SZ.

Coca-Cola HBC Ireland Ltd.,
Ballycoolin,
Dublin 11.

Return To

Coca-Cola HBC Northern Ireland Ltd.,
12 Lissue Road,
Lisburn,
BT28 2SZ.

Coca-Cola HBC Ireland Ltd.,
Ballycoolin,
Dublin 11.

NI: 0-800-317318
ROI: 1-800-317318
coke.com

Telephone Helpline

NI: 0-800-317318
ROI: 1-800-317318

Web Address

coke.com

Extended Data

Safety Warning

Contains a Source of Phenylalanine.

Packaging Weight

Bottle - Grams

190

Hand Separable

Hand Separable - Not Applicable

