

NielsenIQ Brandbank

Cadbury Boost Bars 4 x 31.5g (126g)



EAN

7622201460761

Target market(s)

GB, IE

Components

Ingredients

Milk

Sugar

Vegetable Fats (Palm, Shea)

Glucose Syrup

Whey Powder (from **Milk**)

Cocoa Butter

Fat-Reduced Cocoa Powder

Skimmed **Milk** Powder

Cocoa Mass

Wheat Flour (with added Calcium, Iron, Niacin, Thiamin)

Humectant (Glycerol)

Emulsifiers (E442, E471, E476)

Flavourings

Salt

Thickener (Cellulose)

Raising Agents (Sodium Carbonates, Tartaric Acid)

Barley Malt Syrup

Milk Chocolate: Milk Solids 14% minimum

Contains Vegetable Fats in addition to Cocoa Butter

Allergy Text

May contain Peanuts.

Nutrition

	Per 100 g	Per bar (31.5 g)	*Reference Intakes
Energy	2145 kJ	676 kJ	8400 kJ /
	513 kcal	162 kcal	2000 kcal
Fat	28 g	8.8 g	70 g
of which Saturates	18 g	5.5 g	20 g
Carbohydrate	59 g	19 g	260 g
of which Sugars	52 g	16 g	90 g
Fibre	2.6 g	0.8 g	-

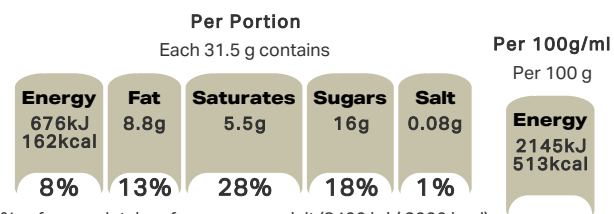
Protein	5.2 g	1.7 g	50 g
Salt	0.26 g	0.08 g	6 g

*% reference intake of an average adult (8400 kJ / 2000 kcal)

Calculated Nutrition

	per 100g	Per bar (31.5 g)
Energy (kJ)	2145	676
Energy (kcal)	513	162
Fat (g)	28	8.8
of which saturates (g)	18	5.5
Carbohydrate (g)	59	19
of which sugars (g)	52	16
Fibre (g)	2.6	0.8
Protein (g)	5.2	1.7
Salt (g)	0.26	0.08

Front of Pack Nutrition



% reference intake of an average adult (8400 kJ / 2000 kcal)

Nutrition Other Text

% reference intake of an average adult (8400 kJ / 2000 kcal)

Reference Intake Statement

Reference Intake Statement - % reference intake of an average adult (8400 kJ / 2000 kcal)

Product Description

Brand

Cadbury

Features

100% Sustainably Sourced Cocoa
162 Calories Per Bar
Suitable for vegetarians

Standardised Brand

Brand - Cadbury

Regulated Product Name

Milk chocolate bar with caramel (26 %) and biscuit (3 %) filling.

Marketing

Company Name

Mondelez UK / Mondelez Ireland

Company Address

Mondelez UK,
PO Box 7008,
Birmingham,
B30 2PT.

Mondelez Ireland,
Malahide Road,
Coolock,
Dublin 5.

Manufacturer Marketing

By Appointment to H.M. The Queen Cocoa and Chocolate Manufacturers Cadbury UK Ltd., Bournville.

Other Information

Made under licence from Cadbury UK Ltd.

Further Description

BeTreatwise.net

Cocoa Life
Partnering with Fairtrade Foundation
To improve the lives of cocoa farmers & our environment
By eating Cadbury, you've helped support cocoa farmers in India
Cocoa Life aims to make lives better.
The education and entrepreneurship training we provide makes for happier farmers and thriving local communities
WWW.COCOALIFE.ORG

Health & Lifestyle

Lifestyle

- Suitable for Vegetarians

Allergy Advice

Barley - Contains
Milk - Contains
Peanuts - May Contain
Wheat - Contains

Storage & Usage

Storage Type

Type

Ambient

Storage

Store in a dry place. Protect from heat.

Date Marking Type

- Best Before

Brandbank Captured Pack Data

Pack Size

0.07lbs e

Numeric Size

Numeric Size - 0.07

Pack Type

Type - Wrap

Usage Count

Number of uses - Servings

4

Usage Other Text

4 portions per pack

Units

Number of Units

Number of Units - 4

Customer Services

Manufacturers Address

Mondelez UK,
PO Box 7008,
Birmingham,
B30 2PT.

Mondelez Ireland,
Malahide Road,
Coolock,
Dublin 5.

Return To

We are passionate about our great quality Cadbury products. Not completely satisfied? Please contact us: Freephone 0800 818181 (UK only).

Mondelez UK,
PO Box 7008,
Birmingham,
B30 2PT.

Mondelez Ireland,
Freephone 1-800 678708
Malahide Road,
Coolock,
Dublin 5.
www.cadbury.co.uk

Telephone Helpline

0800 818181 (UK)
1-800 678708

Web Address

www.cadbury.co.uk

Extended Data

Description Breakdown

Functional Name - Boost Bars

