

NielsenIQ Brandbank

Diet Coke 12 x 330ml



EAN
5449000009814

Target market(s)
IE

Components

Ingredients

Carbonated Water
Colour (Caramel E150d)
Sweeteners (Aspartame, Acesulfame K)
Natural Flavourings including Caffeine
Acids (Phosphoric Acid, Citric Acid)

Nutrition

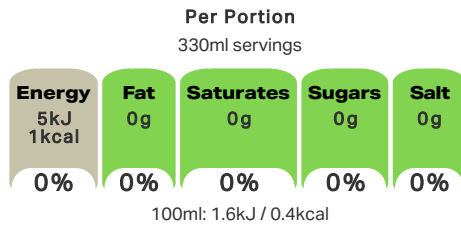
	Per: 100ml	Per: 330ml (%*)
Energy:	1.6kJ/ 0.4kcal	5kJ/ 1kcal (0%)
Fat:	0g	0g (0%)
of which saturates:	0g	0g (0%)
Carbohydrate:	0g	0g (0%)
of which sugars:	0g	0g (0%)
Protein:	0g	0g (0%)
Salt:	0g	0g (0%)

* Reference intake of an average adult (8400kJ/2000kcal)

Calculated Nutrition

	per 100ml	Per: 330ml
Energy (kJ)	1.6	5
Energy (kcal)	0.4	1
Fat (g)	0	0
of which saturates (g)	0	0
Carbohydrate (g)	0	0
of which sugars (g)	0	0
Protein (g)	0	0
Salt (g)	0	0

Front of Pack Nutrition



Reference intake of an average adult (8400kJ/2000kcal)

Nutrition Other Text

Reference intake of an average adult (8400kJ/2000kcal)

Reference Intake Statement

Reference Intake Statement - Reference intake of an average adult (8400kJ/2000kcal)

Product Description

Brand

Diet Coke

Features

Refreshing Taste
No Calories and Sugar

Standardised Brand

Brand - Diet Coke

Regulated Product Name

The No. 1 Cola Flavoured Soft Drink with Vegetable Extracts and Sweeteners

Marketing

Company Name

Coca-Cola HBC Northern Ireland Ltd / Coca-Cola HBC Ireland Ltd

Company Address

Coca-Cola HBC Northern Ireland Ltd,
12 Lissue Road,
Lisburn,
BT28 2SZ.

Coca-Cola HBC Ireland Ltd,
Ballycoolin,
Dublin 11.

Third Party Logos

- FSC
- Green Dot

Product Marketing

The No. 1 Cola Flavoured Soft Drink with Vegetable Extracts and Sweeteners

No calories
Only natural flavours
No added preservatives
Suitable for diabetics, sufferers of lactose intolerance, vegans and vegetarians

No calories

Other Information

FSC - FSC® Mix, Board from responsible sources, FSC® C012938, www.fsc.org

© 2021 The Coca-Cola Company

Nutritional Claims

No Calories
No Sugar

Health & Lifestyle

Lifestyle

- No Sugar

Additives

Sweeteners - Contains

Storage & Usage

Storage Type

Type

Ambient

Preparation and Usage

Best served chilled

Storage

Store cool and dry.
Best before: See base of can.

Brandbank Captured Pack Data

Pack Size

330ml e

Numeric Size

Numeric Size - 330

Recycling Info

Can - Certified as Recyclable

Packaging Material Marks

Can - 41 - Aluminium

Pack Type

Type - Box

Recycling Other Text

Recycle Us
This Was Fun
Let's Do it Again

Usage Count

Number of uses - Servings

12

Usage Other Text

This multipack contains 12 x 330ml cans

Customer Supplied Pack Data

Supplied Dimension

Shelf Height (mm) (In)	Shelf Width (mm) (In)	Shelf Depth (mm) (In)
5.75	6.87	9.15

(GS1 package measurement rules)

Supplied Weight

Gross Weight (g) - 0.91

Supplied Unit Merchandising

Height - 5.75
Width - 6.87
Depth - 9.15
Unit Stable - Yes
Unit Stackable - Yes
Merchandise Multiple Ways - Yes

Supplied Case

Height - 5.87
Width - 9.25
Depth - 13.82
Weight - 18.35
Unit Count - 2
GTIN - 05449000058942

Units

Number of Units

Number of Units - 12

Customer Services

Manufacturers Address

Coca-Cola HBC Northern Ireland Ltd,
12 Lissue Road,
Lisburn,
BT28 2SZ.

Coca-Cola HBC Ireland Ltd,
Ballycoolin,
Dublin 11.

Return To

Coca-Cola HBC Northern Ireland Ltd,
12 Lissue Road,
Lisburn,
BT28 2SZ.
NI 0-800-317318

Coca-Cola HBC Ireland Ltd,
Ballycoolin,
Dublin 11.
ROI 1-800-317318
coke.com

Telephone Helpline

NI 0-800-317318
ROI 1-800-317318

Web Address

coke.com

Extended Data

Safety Warning

Contains a Source of Phenylalanine.

Import Classification

Commodity Code - 22021000

Packaging Weight

Can - Grams

160

Hand Separable

Hand Separable - True

