

NielsenIQ Brandbank

Cadbury Bournville Classic Dark Chocolate Bar 100g



EAN

7622210098917

Target market(s)

GB, IE

Components

Ingredients

Sugar
Cocoa Butter
Cocoa Mass
Palm Oil
Emulsifiers (**Soya** Lecithins, E476)
Skimmed **Milk** Powder
Cocoa Solids 36% minimum
Contains Vegetable Fats in addition to Cocoa Butter

Allergy Text

May contain Nuts.

Nutrition

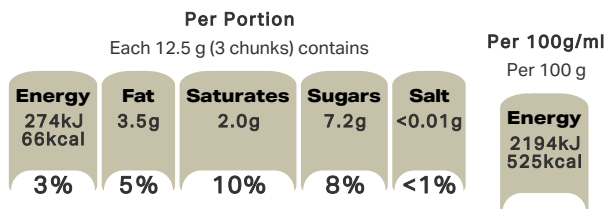
| | Per 100 g | Per 3 chunks (12.5 g) | Reference Intakes |
|--------------------|---------------------|-----------------------|------------------------|
| Energy | 2194 kJ 525 kcal | 274 kJ 66 kcal | 8400 kJ / 2000 kcal |
| Fat | 28 g | 3.5 g | 70 g |
| of which Saturates | 16 g | 2.0 g | 20 g |
| Carbohydrate | 60 g | 7.5 g | 260 g |
| of which Sugars | 58 g | 7.2 g | 90 g |
| Fibre | 6.2 g | 0.8 g | - |
| Protein | 4.3 g | 0.5 g | 50 g |
| Salt | <0.01 g | <0.01 g | 6 g |

% reference intake of an average adult (8400 kJ / 2000 kcal)

Calculated Nutrition

| | per 100g | Per 3 chunks (12.5 g) |
|------------------------|----------|-----------------------|
| Energy (kJ) | 2194 | 274 |
| Energy (kcal) | 525 | 66 |
| Fat (g) | 28 | 3.5 |
| of which saturates (g) | 16 | 2 |
| Carbohydrate (g) | 60 | 7.5 |
| of which sugars (g) | 58 | 7.2 |
| Fibre (g) | 6.2 | 0.8 |
| Protein (g) | 4.3 | 0.5 |
| Salt (g) | <0.01 | <0.01 |

Front of Pack Nutrition



% reference intake of an average adult (8400 kJ / 2000 kcal)

Nutrition Other Text

% reference intake of an average adult (8400 kJ / 2000 kcal)

Reference Intake Statement

Reference Intake Statement - % reference intake of an average adult (8400 kJ / 2000 kcal)

Product Description

Alternative Description

Supplier Preferred Product Name - Cadbury Bournville Classic Dark Chocolate Bar 100g

Brand

Cadbury

Features

100% Sustainably Sourced Cocoa
Suitable for vegetarians

Standardised Brand

Brand - Cadbury

Regulated Product Name

Chocolate.

Marketing

Company Name

Mondelez UK / Mondelez Ireland

Company Address

Mondelez UK,
PO Box 7008,
Birmingham,
B30 2PT.

Mondelez Ireland,
Malahide Road,
Coolock,
Dublin 5.

Third Party Logos

- Green Dot

Product Marketing

The dark chocolate that's held a place in the nation's heart for over 100 years. It's perfectly balanced between a deliciously dark, intensely rich flavour and just the right amount of sweetness. Once you taste it, you'll understand – it can only be Bournville. Made with sustainably sourced cocoa. Vegetarian friendly.

Manufacturer Marketing

By Appointment to H.M. The Queen Cocoa and Chocolate Manufacturers Cadbury UK Ltd., Bournville.

Other Information

Made under licence from Cadbury UK Ltd.

Further Description

BeTreatwise.net

Cocoa Life
Partnering with Fairtrade Foundation
Cocoa life helps farmers get the most from their cocoa trees through environmentally friendly farming
www.cocoalife.org

Health & Lifestyle

Lifestyle

- Suitable for Vegetarians

Allergy Advice

Milk - Contains
Nuts - May Contain
Soya - Contains

Storage & Usage

Storage Type

Type

Ambient

Storage

Store in a dry place. Protect from heat.

Brandbank Captured Pack Data

Pack Size

0.22lbs e

Numeric Size

Numeric Size - 0.22

Pack Type

Type - Wrap

Recycling Other Text

Usage Count

Number of uses - Servings

8

Usage Other Text

3x chunks = 1 Portion. 8 portions per bar

Customer Services

Manufacturers Address

Mondelez UK,
PO Box 7008,
Birmingham,
B30 2PT.

Mondelez Ireland,
Malahide Road,
Coolock,
Dublin 5.

Return To

We are passionate about our great quality Cadbury products. Not completely satisfied? Please contact us:
Freephone 0800 818181 (UK only).

Mondelez UK,
PO Box 7008,
Birmingham,
B30 2PT.

Mondelez Ireland,
Freephone 1-800 678708
Malahide Road,
Coolock,
Dublin 5.
www.cadbury.co.uk

Telephone Helpline

0800 818181 (UK)
1-800 678708

Fax Number

Email Helpline

Web Address

www.cadbury.co.uk

Extended Data

SEO Metatag

Chocolate Bar, Bournville Dark Chocolate, Cadbury Dark Chocolate, Is Bournville Classic Dark Chocolate Vegan, Dark Chocolate, Vegetarian Chocolate, 36% Cocoa Chocolate, Dark Chocolate Bar, Sweet Dark Chocolate, Dark Chocolate With A Low Percent

