

Knorr Chicken Noodle Soup 1.5 Pints/48g



EAN

8712566301799

Target market(s)

GB, IE

Components

Ingredients

Pasta (64%) (Durum **WHEAT** Semolina, **WHEAT** Flour)

Flavourings (contain **CELERY**)

Iodised Salt

Chicken (4.6%) [Chicken, Palm Oil, Salt, Antioxidants (Ascorbyl Palmitate, Alpha-Tocopherol)]

Starch

Yeast Extract

Chicken Fat (2.5%) [(Chicken Fat, Antioxidant (Extracts of Rosemary)]

Toasted Onion Powder† (2%)

Potassium Chloride

Sugar

Salt

Spices (**CELERY** Seeds, Turmeric, Pepper)

Parsley

† Sustainably grown

Allergy Text

May contain Egg, Milk, Mustard, Soy and other Cereals containing Gluten.

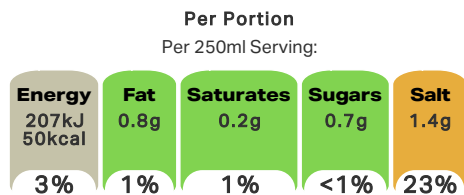
Nutrition

	Per 100ml prepared	Per portion**	%* per portion**
Energy	82 kJ/20 kcal	207 kJ/50 kcal	3 %
Fat	< 0.5 g	0.8 g	1 %
of which saturates	< 0.1 g	0.2 g	1 %
Carbohydrate	3.3 g	8.4 g	3 %
of which sugars	< 0.5 g	0.7 g	< 1 %
Fibre	< 0.5 g	< 0.5 g	
Protein	0.8 g	2.0 g	4 %
Salt	0.55 g	1.4 g	23 %
*% of Reference Intake of an average adult (8400 kJ / 2000kcal)			
** 1 portion = 250ml (Pack contains 3 portions)			

Calculated Nutrition

	Per 100ml prepared	Per portion
Energy (kJ)	82	207
Energy (kcal)	20	50
Fat (g)	<0.5	0.8
of which saturates (g)	<0.1	0.2
Carbohydrate (g)	3.3	8.4
of which sugars (g)	<0.5	0.7
Fibre (g)	<0.5	<0.5
Protein (g)	0.8	2
Salt (g)	0.55	1.4

Front of Pack Nutrition



Energy per 100ml: 82kJ/20kcal

% of Reference Intake of an average adult (8400 kJ / 2000kcal)

Nutrition Other Text

% of Reference Intake of an average adult (8400 kJ / 2000kcal)
1 portion = 250ml (Pack contains 3 portions)

Reference Intake Statement

Reference Intake Statement - % of Reference Intake of an average adult (8400 kJ / 2000kcal)

Product Description

Brand

Knorr

Features

Partnership for Sustainability
No added MSG
Free from artificial colours and preservatives

Standardised Brand

Brand - Knorr

Regulated Product Name

Chicken Noodle Soup Mix

Marketing

Company Name

Unilever Ireland / Unilever UK

Company Address

Unilever Ireland,
20 Riverwalk,
Citywest,
Dublin 24.

Unilever UK,
Freepost,
ADM3940,
London,
SW1A 1YR.

Brand Marketing

Our Knorr chefs have created this delicious soup with a selection of our finest ingredients. Staples of the kitchen cupboard, our packet soups are as tasty as they are versatile.

Other Information

Knorr, Unilever and the U device are registered trademarks

Further Description

Our Knorr chefs believe that great tasting and high quality ingredients come from a conscious use of agricultural resources. To learn more, please visit www.knorr.ie.

Health & Lifestyle

Allergy Advice

Celery - Contains
Cereals Containing Gluten - May Contain
Eggs - May Contain
Milk - May Contain
Mustard - May Contain
Soya - May Contain
Wheat - Contains

Additives

Added MSG - Free From
Artificial Colours - Free From
Artificial Preservatives - Free From

Storage & Usage

Storage Type

Type

Ambient

Preparation and Usage

Preparation Method:

- 1) Empty contents of the sachet into saucepan. Gradually add 850ml (1.5 pts) of cold water, stirring constantly.
- 2) Bring to boil, reduce heat, partially cover & simmer for 5 minutes, stirring occasionally
- 3) Serve & enjoy!

Storage

Store in a cool, dry place.

Date Marking Type

- Best Before

Brandbank Captured Pack Data

Pack Size

0.11lbs e

Numeric Size

Numeric Size - 0.11

Pack Type

Type - Sachet

Usage Count

Number of uses - Servings

3

Usage Other Text

1 portion = 250ml (Pack contains 3 portions)

Customer Services

Manufacturers Address

Unilever Ireland,
20 Riverwalk,
Citywest,
Dublin 24.

Unilever UK,
Freepost,
ADM3940,
London,
SW1A 1YR.

Return To

Unilever Ireland,
20 Riverwalk,
Citywest,
Dublin 24.

Unilever UK,
Freepost,
ADM3940,
London,
SW1A 1YR.

Any comments or questions?

(IE) Freephone 180070 80 50, (UK) Freephone 0800 731 1411 Mon-Fri 8am-6pm, UKIcare@unilever.com
www.knorr.ie / www.knorr.com/uk

Telephone Helpline

(IE) 180070 80 50
(UK) 0800 731 1411

Email Helpline

UKIcare@unilever.com

Web Address

www.knorr.ie
www.knorr.com/uk

Extended Data

Description Breakdown

Functional Name - Soup
Variant - Chicken Noodle



NUTRITION INFORMATION (Typical values)	Per 100ml prepared	Per portion**	%* per portion**
Energy	82 kJ/20 kcal	207 kJ/50 kcal	3 %
Fat	< 0.5 g	0.8 g	1 %
of which saturates	< 0.1 g	0.2 g	1 %
Carbohydrate	3.3 g	8.4 g	3 %
of which sugars	< 0.5 g	0.7 g	< 1 %
Fibre	< 0.5 g	< 0.5 g	
Protein	0.8 g	2.0 g	4 %
Salt	0.55 g	1.4 g	23 %

*% of Reference Intake of an average adult (8400 kJ / 2000 kcal)
 ** 1 portion = 250ml
 (Pack contains 3 portions)

Ingredients: Pasta (64%) (durum **WHEAT** semolina, **WHEAT** flour), flavourings (contain **CELERY**), iodised salt, chicken (4.6%) (chicken, palm oil, salt, antioxidants (ascorbyl palmitate, alpha-tocopherol)), starch, yeast extract, chicken fat (2.5%) ((chicken fat, antioxidant (extracts of rosemary))), toasted onion powder¹ (2%), potassium chloride, sugar, salt, spices (**CELERY** seeds, turmeric, pepper), parsley¹.
 May contain egg, milk, mustard, soy and other cereals containing gluten.
¹ Sustainably grown