

# NielsenIQ Brandbank

## Knorr Thick Chicken Soup 1.5 Pints/62g



EAN

8712566301768

Target market(s)

GB, IE

### Components

#### Ingredients

Flour (**WHEAT**, Rice)

Palm Fat

Modified Starch

Iodised Salt

Flavourings (contain **CELERY**, **EGG**)

Glucose Syrup

Yeast Extract

Chicken Fat (2%) [Chicken Fat, Antioxidant (Extracts of Rosemary)]

Chicken (2%) [Chicken, Salt, Antioxidants (Butylated Hydroxyanisole, Propyl Gallate)]

**MILK** Proteins

Sugar

Potassium Chloride

Salt

Toasted Onion Powder†

Spices (Pepper, Garlic†, Turmeric, Parsley Roots)

Herbs (Sage†, Rosemary†)

† Sustainably grown

#### Allergy Text

May contain Mustard, Soy and other Cereals containing Gluten.

#### Nutrition

|                    | Per 100ml prepared | Per portion**    | %* per portion** |
|--------------------|--------------------|------------------|------------------|
| Energy             | 139 kJ / 33 kcal   | 347 kJ / 83 kcal | 4 %              |
| Fat                | 1.7 g              | 4.3 g            | 6 %              |
| of which saturates | 0.9 g              | 2.4 g            | 12 %             |
| Carbohydrate       | 3.7 g              | 9.3 g            | 4 %              |
| of which sugars    | < 0.5 g            | < 0.5 g          | < 1 %            |
| Fibre              | < 0.5 g            | < 0.5 g          |                  |
| Protein            | 0.6 g              | 1.6 g            | 3 %              |
| Salt               | 0.66 g             | 1.6 g            | 27 %             |

\*% of Reference Intake of an average adult (8400 kJ /

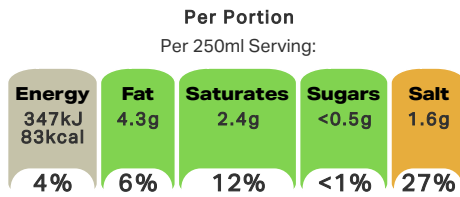
2000 kcal)

\*\*1 portion = 250ml (Pack contains 3 portions)

#### Calculated Nutrition

|                        | Per 100ml prepared | Per portion |
|------------------------|--------------------|-------------|
| Energy (kJ)            | 139                | 347         |
| Energy (kcal)          | 33                 | 83          |
| Fat (g)                | 1.7                | 4.3         |
| of which saturates (g) | 0.9                | 2.4         |
| Carbohydrate (g)       | 3.7                | 9.3         |
| of which sugars (g)    | <0.5               | <0.5        |
| Fibre (g)              | <0.5               | <0.5        |
| Protein (g)            | 0.6                | 1.6         |
| Salt (g)               | 0.66               | 1.6         |

#### Front of Pack Nutrition



Energy per 100ml: 139kJ/33kcal

% of Reference Intake of an average adult (8400 kJ / 2000 kcal)

#### Nutrition Other Text

% of Reference Intake of an average adult (8400 kJ / 2000 kcal)

1 portion = 250ml (Pack contains 3 portions)

#### Reference Intake Statement

Reference Intake Statement - % of Reference Intake of an average adult (8400 kJ / 2000 kcal)

## Product Description

#### Brand

Knorr

#### Features

No added MSG

Free from artificial colours and preservatives

Partnership for Sustainability

#### Standardised Brand

Brand - Knorr

#### Regulated Product Name

Thick Chicken Soup Mix

## Marketing

### Company Name

Unilever Ireland / Unilever UK

### Company Address

Unilever Ireland,  
20 Riverwalk,  
Citywest,  
Dublin 24.

Unilever UK,  
Freepost,  
ADM 3940,  
London,  
SW1A 1YR.

### Brand Marketing

Our Knorr chefs have created this delicious soup with a selection of our finest ingredients. Staples of the kitchen cupboard, our packet soups are as tasty as they are versatile.

Our Knorr chefs believe that great tasting and high quality ingredients come from a conscious use of agricultural resources.

### Other Information

Knorr, Unilever and the U device are registered trademarks

### Further Description

To learn more, please visit [www.knorr.ie](http://www.knorr.ie).

## Health & Lifestyle

### Allergy Advice

Celery - Contains  
Cereals Containing Gluten - May Contain  
Eggs - Contains  
Milk - Contains  
Mustard - May Contain  
Soya - May Contain  
Wheat - Contains

### Additives

Added MSG - Free From  
Artificial Colours - Free From  
Artificial Preservatives - Free From

## Storage & Usage

### Storage Type

#### Type

Ambient

### Preparation and Usage

Preparation Method:

- 1) Empty contents of the sachet into saucepan. Gradually add 850ml (1.5 pts) of cold water, stirring constantly.
- 2) Bring to boil, reduce heat, partially cover & simmer for 5 minutes, stirring occasionally.
- 3) Serve & enjoy!

### Storage

Store in a cool, dry place.

### Date Marking Type

- Best Before

## Brandbank Captured Pack Data

### Pack Size

0.14lbs e

### Numeric Size

Numeric Size - 0.14

### Pack Type

Type - Sachet

### Usage Count

Number of uses - Servings

3

### Usage Other Text

1 portion = 250ml (Pack contains 3 portions)

## Customer Services

### Manufacturers Address

Unilever Ireland,  
20 Riverwalk,  
Citywest,  
Dublin 24.

Unilever UK,  
Freepost,  
ADM3940,  
London,  
SW1A 1YR.

### Return To

Unilever Ireland,  
20 Riverwalk,  
Citywest,  
Dublin 24.

Unilever UK,  
Freepost,  
ADM 3940,  
London,  
SW1A 1YR.

Any comments or questions?

(IE) Freephone 1800 70 80 50, (UK) Freephone 0800 731 1411

Mon-Fri 8am-6pm, UKIcare@unilever.com

www.knorr.ie / www.knorr.com/uk

### Telephone Helpline

(IE) 1800 70 80 50  
(UK) 0800 731 1411

### Email Helpline

UKIcare@unilever.com

### Web Address

www.knorr.ie  
www.knorr.com/uk

## Extended Data

### Description Breakdown

Functional Name - Soup  
Variant - Thick Chicken



| NUTRITION INFORMATION (Typical values) | Per 100ml prepared | Per portion**  | %* per portion** |
|--|--------------------|----------------|------------------|
| Energy                                 | 139 kJ/33 kcal     | 347 kJ/83 kcal | 4 %              |
| Fat                                    | 1.7 g              | 4.3 g          | 6 %              |
| of which saturates                     | 0.9 g              | 2.4 g          | 12 %             |
| Carbohydrate                           | 3.7 g              | 9.3 g          | 4 %              |
| of which sugars                        | < 0.5 g            | < 0.5 g        | < 1 %            |
| Fibre                                  | < 0.5 g            | < 0.5 g        |                  |
| Protein                                | 0.6 g              | 1.6 g          | 3 %              |
| Salt                                   | 0.66 g             | 1.6 g          | 27 %             |

\*% of Reference Intake of an average adult (8400 kJ / 2000 kcal)  
 \*\* 1 portion = 250ml  
 (Pack contains 3 portions)

Ingredients: Flour (**WHEAT**, rice), palm fat, modified starch, iodised salt, flavourings (contain **CELERY**, **EGG**), glucose syrup, yeast extract, chicken fat (2%) [chicken fat, antioxidant (extracts of rosemary)], chicken (2%) [chicken, salt, antioxidants (butylated hydroxyanisole, propyl gallate)], **MILK** proteins, sugar, potassium chloride, salt, toasted onion powder<sup>†</sup>, spices (pepper, garlic<sup>†</sup>, turmeric, parsley roots<sup>†</sup>), herbs (sage<sup>†</sup>, rosemary<sup>†</sup>).  
 May contain mustard, soy and other cereals containing gluten.  
<sup>†</sup> Sustainably grown