

Knorr Farmhouse Vegetable Soup 1.5 Pints/74g



EAN

8712566301829

Target market(s)

GB, IE

Components

Ingredients

WHEAT Flour

Starch

Whey Product (**MILK**)

Maltodextrin

Iodised Salt

Potatoes (5.4%)

Palm Fat

Yeast Extract

Lactose (**MILK**)

Salt

Sugar†

Onion Powder†

Carrots† (2%)

CELERIAC†

Peas†

Tomatoes†

Flavourings

Spices (Turmeric, Garlic Powder†, Parsley Root†)

Herbs (**CELERY** Leaves†, Sage†, Rosemary†)

†Sustainably grown

Allergy Text

May contain Egg, Mustard, Soy and other Cereals containing Gluten.

Nutrition

	Per 100ml prepared	Per portion**	%* per portion**
Energy	132 kJ/32 kcal	332 kJ/79 kcal	4 %
Fat	0.5 g	1.3 g	2 %
of which saturates	0.3 g	0.7 g	4 %
Carbohydrate	5.6 g	14 g	5 %
of which sugars	1.0 g	2.5 g	3 %
Fibre	< 0.5 g	0.7 g	

Protein	0.8 g	2.1 g	4 %
Salt	0.73 g	1.8 g	30 %

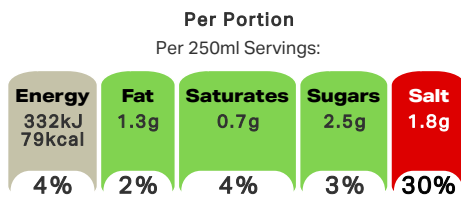
*% of Reference Intake of an average adult (8400 kJ / 2000 kcal)

** 1 portion = 250ml (Pack contains 3 portions)

Calculated Nutrition

	Per 100ml prepared	Per portion
Energy (kJ)	132	332
Energy (kcal)	32	79
Fat (g)	0.5	1.3
of which saturates (g)	0.3	0.7
Carbohydrate (g)	5.6	14
of which sugars (g)	1	2.5
Fibre (g)	<0.5	0.7
Protein (g)	0.8	2.1
Salt (g)	0.73	1.8

Front of Pack Nutrition



Energy per 100ml: 132kJ/32kcal

% of Reference Intake of an average adult (8400 kJ / 2000 kcal)

Nutrition Other Text

% of Reference Intake of an average adult (8400 kJ / 2000 kcal)
1 portion = 250ml (Pack contains 3 portions)

Reference Intake Statement

Reference Intake Statement - % of Reference Intake of an average adult (8400 kJ / 2000 kcal)

Product Description

Brand

Knorr

Features

Made with sustainably grown onions and carrots
Partnership for Sustainability
No added MSG
Free from artificial colours and preservatives
European Vegetarian Union
Suitable for Vegetarians

Standardised Brand

Brand - Knorr

Regulated Product Name

Farmhouse Vegetable Soup Mix

Marketing

Company Name

Unilever Ireland / Unilever Ireland

Company Address

Unilever Ireland,
20 Riverwalk,
Citywest,
Dublin 24.

Unilever UK,
Freepost,
ADM3940,
London,
SW1A 1YR.

Third Party Logos

- V-Label (European Vegetarian Union)

Brand Marketing

Our Knorr chefs have created this delicious soup with a selection of our finest ingredients. Staples of the kitchen cupboard, our Packet Soups are as tasty as they are versatile.

Other Information

V-Label (European Vegetarian Union) - Vegetarians, V-LABEL.EU

Knorr, Unilever and the U device are registered trademarks

Further Description

Our Knorr chefs believe that great tasting and high quality ingredients come from a conscious use of agricultural resources. To learn more, please visit www.knorr.ie.

Health & Lifestyle

Lifestyle

- Suitable for Vegetarians

Allergy Advice

Celery - Contains
Cereals Containing Gluten - May Contain
Eggs - May Contain
Milk - Contains
Mustard - May Contain
Soya - May Contain
Wheat - Contains

Additives

Added MSG - Free From
Artificial Colours - Free From
Artificial Preservatives - Free From

Storage & Usage

Storage Type

Type

Ambient

Preparation and Usage

Preparation Method:

- 1) Empty contents of the sachet into saucepan. Gradually add 850ml (1.5 pts) of cold water, stirring constantly.
- 2) Bring to boil, reduce heat, partially cover & simmer for 5 minutes, stirring occasionally
- 3) Serve & enjoy!

Storage

Store in a cool, dry place.

Date Marking Type

- Best Before

Brandbank Captured Pack Data

Pack Size

0.16lbs e

Numeric Size

Numeric Size - 0.16

Pack Type

Type - Sachet

Usage Count

Number of uses - Servings

3

Usage Other Text

1 portion = 250ml (Pack contains 3 portions)

Customer Services

Manufacturers Address

Unilever Ireland,
20 Riverwalk,
Citywest,
Dublin 24.

Unilever UK,
Freepost,
ADM3940,
London,
SW1A 1YR.

Return To

Unilever Ireland,
20 Riverwalk,
Citywest,
Dublin 24.

Unilever UK,
Freepost,
ADM3940,
London,
SW1A 1YR.

Any comments or questions?

(IE) Freephone 1800 70 80 50, (UK) Freephone 0800 731 1411 Mon-Fri 8am-6pm, UKIcare@unilever.com
www.knorr.ie / www.knorr.com/uk

Telephone Helpline

(IE) 1800 70 80 50
(UK) 0800 731 1411

Email Helpline

UKIcare@unilever.com

Web Address

www.knorr.ie
www.knorr.com/uk

Extended Data

Description Breakdown

Functional Name - Soup
Variant - Farmhouse Vegetable



NUTRITION INFORMATION (Typical values)	Per 100ml prepared	Per portion**	%* per portion**
Energy	132 kJ/32 kcal	332 kJ/79 kcal	4 %
Fat	0.5 g	1.3 g	2 %
of which saturates	0.3 g	0.7 g	4 %
Carbohydrate	5.6 g	14 g	5 %
of which sugars	1.0 g	2.5 g	3 %
Fibre	< 0.5 g	0.7 g	
Protein	0.8 g	2.1 g	4 %
Salt	0.73 g	1.8 g	30 %

*% of Reference Intake of an average adult (8400 kJ / 2000 kcal)

** 1 portion = 250ml

Ingredients: **WHEAT** flour, starch, whey product (**MILK**), maltodextrin, iodised salt, potatoes (5.4%), palm fat, yeast extract, lactose (**MILK**), salt, sugar[†], onion powder[†], carrots[†] (2%), **CELERIAC**, peas[†], tomatoes[†], flavourings, spices (turmeric, garlic powder[†], parsley roots[†]), herbs (**CELERY** leaves[†], sage[†], rosemary[†]). May contain egg, mustard, soy and other cereals containing gluten.