

## Knorr Quick Pasta Bolognese 68g



### EAN

8714100371053

### Target market(s)

GB, IE

## Components

### Ingredients

Pasta of Durum **WHEAT** Semolina (64%)

Tomato Puree Powder† (12%)

Palm Fat

Onion Powder†

Beef Granules (1.8%) (Beef, Salt, Maltodextrin, Dried **EGG** White)

Flavourings

Carrot Juice Powder†

Tomatoes† (1.1%)

### **CELERIAC**

Yeast Extract

Sugar

Salt

Potassium Chloride

Carrots†

Herbs (Parsley†, Oregano†)

Iodised Salt

Spices (Garlic Powder†, Pepper)

Red Bell Peppert

†From sustainable agriculture

### Allergy Text

May contain other Cereals containing Gluten, Milk, Mustard, Sesame and Soy.

### Nutrition

	(as prepared) Per 100g	(as prepared) Per pot**	%* per pot**
Energy	410kJ	1100kJ	13%
	98kcal	263kcal	
Fat	2.0g	5.3g	8%
of which saturates	1.0g	2.7g	14%
Carbohydrate	16g	42g	16%
of which sugars	2.9g	7.9g	9%
Fibre	1.5g	4.1g	

Protein	3.4g	9.2g	18%
Salt	0.61g	1.6g	27%
*% of Reference Intake of an average adult (8400kJ/2000kcal)			
**Pot makes up to 268g after preparation with water = 1 portion			

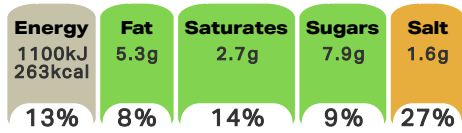
### Calculated Nutrition

	(as prepared) Per 100g	(as prepared) Per pot
Energy (kJ)	410	1100
Energy (kcal)	98	263
Fat (g)	2	5.3
of which saturates (g)	1	2.7
Carbohydrate (g)	16	42
of which sugars (g)	2.9	7.9
Fibre (g)	1.5	4.1
Protein (g)	3.4	9.2
Salt (g)	0.61	1.6

### Front of Pack Nutrition

#### Per Portion

Each pot (268g) contains:



Energy per 100g as prepared: 410kJ/98kcal

% of Reference Intake of an average adult (8400kJ/2000kcal)

### Nutrition Other Text

% of Reference Intake of an average adult (8400kJ/2000kcal)

Pot makes up to 268g after preparation with water = 1 portion

### Reference Intake Statement

Reference Intake Statement - % of Reference Intake of an average adult (8400kJ/2000kcal)

## Product Description

### Brand

Knorr

### Features

This enduring favourite now comes in a cup  
 For a tasty hot meal in minutes, awaken the delicious flavours in a Quick Lunch cup  
 Just pour on boiling water, stir and allow five minutes for the meaty Italian flavours to be released  
 Free from artificial flavour enhancers, colours or preservatives  
 Made with sustainably grown tomatoes  
 Great Taste is in our Nature!

### Standardised Brand

Brand - Knorr

### Regulated Product Name

Instant pasta in a beef bolognese sauce

## Marketing

### Company Name

Unilever Ireland / Unilever UK

### Company Address

Unilever Ireland,  
20 Riverwalk,  
Citywest,  
Dublin 24.

Unilever UK,  
Knorr,  
Freepost ADM3940,  
London,  
SW1A 1YR.

### Third Party Logos

- Mobius Loop

### Product Marketing

This enduring favourite now comes in a cup - just pour on boiling water, stir and allow five minutes for the meaty Italian flavours to release as the pasta turns plump and delicious.

### Other Information

Knorr, Unilever and the U device are registered trademarks.

### Further Description

Creating a sustainable food future, for you and the planet  
More information on [www.knorr.ie](http://www.knorr.ie)

### Nutritional Claims

Source of protein & fibre

## Health & Lifestyle

### Allergy Advice

Celery - Contains  
Cereals Containing Gluten - May Contain  
Eggs - Contains  
Milk - May Contain  
Mustard - May Contain  
Sesame - May Contain  
Soya - May Contain  
Wheat - Contains

### Additives

Artificial Colours - Free From  
Artificial Preservatives - Free From

## Storage & Usage

### Storage Type

#### Type

Ambient

### Preparation and Usage

Stir well and enjoy

Simple snacking!

- 1 Peel back the lid and fill me right up to the line.
- 2 Stir, then leave me for 5 minutes.
- 3) Give me a final stir and tuck in!

### Storage

Store in a cool dry place.  
Best before end: see on pack

## Brandbank Captured Pack Data

### Pack Size

0.15lbs e

### Numeric Size

Numeric Size - 0.15

### Pack Type

Type - Pot

### Recycling Other Text

Please give me a second life: Recycle each part separately  
Please dispose of the plastic pot, aluminium lid and cardboard sleeve according to your local recycling guidelines

### Usage Count

Number of uses - Servings

1

### Usage Other Text

Pot makes up to 268g after preparation with water = 1 portion

## Customer Services

### Manufacturers Address

Unilever Ireland,  
20 Riverwalk,  
Citywest,  
Dublin 24.

Unilever UK,  
Knorr,  
Freepost ADM3940,  
London,  
SW1A 1YR.

### Return To

Unilever Ireland,  
20 Riverwalk,  
Citywest,  
Dublin 24.

Unilever UK,  
Knorr,  
Freepost ADM3940,  
London,  
SW1A 1YR.  
Any comments or questions?  
(UK) Freephone 0800 731 1411  
(IE) Callsave 1850 28 10 27  
(Mon-Fri 8am-6pm)  
[www.knorr.com/uk](http://www.knorr.com/uk)  
[www.knorr.com/ie](http://www.knorr.com/ie)  
[UKIcareline@unilever.com](mailto:UKIcareline@unilever.com)

### Telephone Helpline

(UK) 0800 731 14  
(IE) 1850 28 10 27

### Email Helpline

[UKIcareline@unilever.com](mailto:UKIcareline@unilever.com)

### Web Address

[www.knorr.com/uk](http://www.knorr.com/uk)  
[www.knorr.com/ie](http://www.knorr.com/ie)

## Extended Data

### Description Breakdown

Functional Name - Quick Pasta Bolognese



68g

Ingredients: Pasta of durum **WHEAT** semolina (64%), tomato puree powder\* (12%), palm fat, onion powder, beef granules (1.8%) (beef, salt, maltodextrin, dried **EGG** white), flavourings, carrot juice powder, tomatoes\* (1.1%), **CELERIAC**, yeast extract, sugar, salt, potassium chloride, carrots, herbs (parsley, oregano), iodised salt, spices (garlic powder, pepper), red bell pepper\*. May contain other cereals containing gluten, milk, mustard, sesame and soy.

NUTRITION INFORMATION (Typical values as prepared)	Per 100g	Per pot**	%* per pot**
Energy	410kJ 98kcal	1100kJ 263kcal	13%
Fat	2.0g	5.3g	8%
of which saturates	1.0g	2.7g	14%
Carbohydrate	16g	42g	16%
of which sugars	2.9g	7.9g	9%
Fibre	1.5g	4.1g	
Protein	3.4g	9.2g	18%
Salt	0.61g	1.6g	27%

\*% of Reference Intake of an average adult (8400kJ/2000kcal)  
 \*\*Pot makes up to 268g after preparation with water = 1 portion