

NielsenIQ Brandbank

Cadbury Dairy Milk Wholenut 55g



EAN

5034660003960

Target market(s)

GB, IE

Components

Ingredients

Milk**

Sugar

Cocoa Butter

Hazelnuts

Cocoa Mass

Vegetable Fats (Palm, Shea)

Emulsifiers (E442, E476)

Flavourings

**The equivalent of 426ml of Fresh Liquid Milk in every 227g of Milk Chocolate

Milk Chocolate: Milk Solids 20% minimum, actual 23%

Cocoa Solids 20% minimum

Contains Vegetable Fats in addition to Cocoa Butter

Allergy Text

May contain Nuts, Wheat

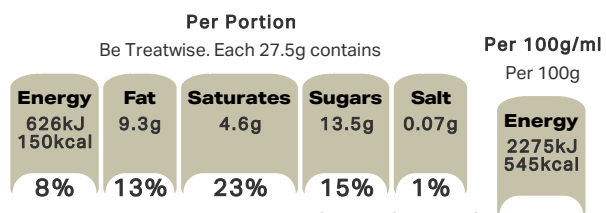
Nutrition

	Per 100g	Per 1/2 Bar (27.5g)	*Reference Intakes
Energy	2275 kJ	626 kJ	8400 kJ/
	545 kcal	150 kcal	2000 kcal
Fat	33.5g	9.3g	70g
of which Saturates	16.5g	4.6g	20g
Carbohydrate	50.5g	14.0g	260g
of which Sugars	50.0g	13.5g	90g
Fibre	1.8g	0.5g	-
Protein	9.2g	2.5g	50g
Salt	0.25g	0.07g	6g
2 portions per bar			
*% reference intake of an average adult (8400 kJ/2000 kcal)			

Calculated Nutrition

	per 100g	Per 1/2 Bar (27.5g)
Energy (kJ)	2275	626
Energy (kcal)	545	150
Fat (g)	33.5	9.3
of which saturates (g)	16.5	4.6
Carbohydrate (g)	50.5	14
of which sugars (g)	50	13.5
Fibre (g)	1.8	0.5
Protein (g)	9.2	2.5
Salt (g)	0.25	0.07

Front of Pack Nutrition



% reference intake of an average adult (8400 kJ/2000 kcal)

Product Description

Brand

Cadbury

Features

Suitable for vegetarians

Standardised Brand

Brand - Cadbury

Regulated Product Name

Milk Chocolate with Hazelnuts (12%).

Marketing

Company Name

Mondelez Ireland

Company Address

Malahide Road,
Coolock,
Dublin 5.

Brand Marketing

Cadbury Dairy Milk made in Ireland since 1933

Health & Lifestyle

Lifestyle

- Suitable for Vegetarians

Allergy Advice

Hazelnuts - Contains
Milk - Contains
Nuts - May Contain
Wheat - May Contain

Storage & Usage

Storage Type

Type

Ambient

Storage

Store in a cool, dry place

Brandbank Captured Pack Data

Pack Size

0.12lbs e

Numeric Size

Numeric Size - 0.12

Dimension

Shelf Height (in)	Shelf Width (in)	Shelf Depth (in)
1.93	4.41	0.55

(GS1 package measurement rules)

Pack Type

Type - Re-Closable Packaging

Weight

Gross Weight - 0.12

New Product Development

Final Product - Not NPD

Unit Merchandising

Height - 1.93
Width - 4.41
Depth - 0.55
Unit Stackable - Yes
Unit Stable - Yes
Merchandise Multiple Ways - No

Usage Count

Number of uses - Servings

2

Usage Other Text

2 portions per bar

Customer Services

Manufacturers Address

Mondelez Ireland,
Malahide Road,
Coolock,
Dublin 5.

Return To

We are passionate about great quality Cadbury products.
Not completely satisfied? Please contact us:
Mondelez Ireland,
Malahide Road,
Coolock,
Dublin 5.
Freephone 1-800 678708
www.cadbury.ie

Telephone Helpline

1-800 678708

Web Address

www.cadbury.ie

Extended Data

Description Breakdown

Variant - Wholenut

