

# NielsenIQ Brandbank

---

## Cadbury Dairy Milk Mint Crisp 54g



EAN  
5034660004042

Target market(s)  
GB, IE

## Components

### Ingredients

#### Milk\*\*

Sugar

Cocoa Butter

Glucose Syrup

Cocoa Mass

Vegetable Fats (Palm, Shea)

Emulsifiers (E442, E476)

Flavourings

\*\*The equivalent of 426ml of Fresh Liquid Milk in every 227g of Milk Chocolate

Milk Chocolate: Milk Solids 20% minimum, actual 23%

Cocoa Solids 20% minimum

Contains Vegetable Fats in addition to Cocoa Butter

### Allergy Text

May contain Nuts, Wheat

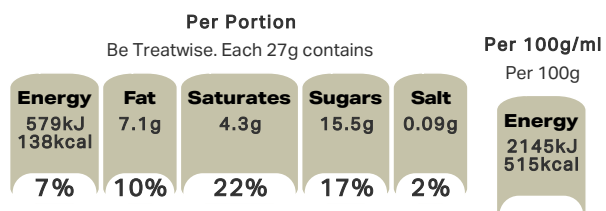
### Nutrition

	Per 100g	Per 1/2 Bar (27g)	*Reference Intakes
Energy	2145 kJ	579 kJ	8400 kJ/
	515 kcal	138 kcal	2000 kcal
Fat	26.5g	7.1g	70g
of which Saturates	16.0g	4.3g	20g
Carbohydrate	61.0g	16.5g	260g
of which Sugars	57.5g	15.5g	90g
Fibre	0.6g	0.2g	-
Protein	7.4g	2.0g	50g
Salt	0.32g	0.09g	6g
2 portions per bar			
*% reference intake of an average adult (8400 kJ/2000 kcal)			

### Calculated Nutrition

	per 100g	Per 1/2 Bar (27g)
Energy (kJ)	2145	579
Energy (kcal)	515	138
Fat (g)	26.5	7.1
of which saturates (g)	16	4.3
Carbohydrate (g)	61	16.5
of which sugars (g)	57.5	15.5
Fibre (g)	0.6	0.2
Protein (g)	7.4	2
Salt (g)	0.32	0.09

### Front of Pack Nutrition



% reference intake of an average adult (8400 kJ/2000 kcal)

## Product Description

### Brand

Cadbury

### Features

Suitable for vegetarians

### Standardised Brand

Brand - Cadbury

### Regulated Product Name

Mint Flavoured Milk Chocolate with Honeycombed Granules (12%).

## Marketing

### Company Name

Mondelez Ireland

### Company Address

Malahide Road,  
Coolock,  
Dublin 5.

### Brand Marketing

Cadbury Dairy Milk made in Ireland since 1933

## Health & Lifestyle

### Lifestyle

- Suitable for Vegetarians

### Allergy Advice

Milk - Contains  
Nuts - May Contain  
Wheat - May Contain

## Storage & Usage

### Storage Type

#### Type

Ambient

### Storage

Store in a cool, dry place

## Brandbank Captured Pack Data

### Pack Size

0.12lbs e

### Numeric Size

Numeric Size - 0.12

### Dimension

Shelf Height (in)	Shelf Width (in)	Shelf Depth (in)
1.93	4.45	0.55

### (GS1 package measurement rules)

### Pack Type

Type - Re-Closable Packaging

### Weight

Gross Weight - 0.12

### New Product Development

Final Product - Not NPD

### Unit Merchandising

Height - 1.93  
Width - 4.45  
Depth - 0.55  
Unit Stackable - Yes  
Unit Stable - Yes  
Merchandise Multiple Ways - No

### Usage Count

Number of uses - Servings

2

### Usage Other Text

2 portions per bar

## Customer Services

### Manufacturers Address

Mondelez Ireland,  
Malahide Road,  
Coolock,  
Dublin 5.

### Return To

We are passionate about our great quality Cadbury products.  
Not completely satisfied? Please contact us:  
Mondelez Ireland,  
Malahide Road,  
Coolock,  
Dublin 5.  
Freephone 1-800 678708  
www.cadbury.ie

### Telephone Helpline

1-800 678708

### Web Address

www.cadbury.ie

## Extended Data

### Description Breakdown

Variant - Mint Crisp

