

NielsenIQ Brandbank

Cadbury Dairy Milk Tiffin 53g



EAN

5034660003915

Target market(s)

GB, IE

Components

Ingredients

Milk**

Sugar

Dried Grapes

Cocoa Butter

Cocoa Mass

Vegetable Fats (Palm, Shea)

Wheat Flour

Emulsifiers (E442, E476)

Salt

Raising Agents (Sodium Bicarbonate, Ammonium Bicarbonate)

Flavourings

**The equivalent of 426ml of Fresh Liquid Milk in every 227g of Milk Chocolate

Milk Chocolate: Milk Solids 20% minimum, actual 23%

Cocoa Solids 20% minimum

Contains Vegetable Fats in addition to Cocoa Butter

Allergy Text

May contain Nuts

Nutrition

	Per 100g	Per 1/2 Bar (26.5g)	*Reference Intakes
Energy	2105 kJ	558 kJ	8400 kJ/
	505 kcal	133 kcal	2000 kcal
Fat	26.0g	6.8g	70g
of which Saturates	15.5g	4.1g	20g
Carbohydrate	59.5g	16.0g	260g
of which Sugars	56.0g	15.0g	90g
Fibre	2.1g	0.5g	-
Protein	7.0g	1.9g	50g
Salt	0.28g	0.07g	6g

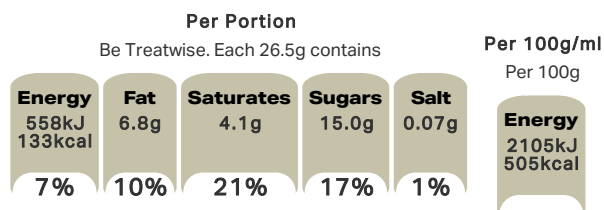
2 x 26.5 g servings per bar

*% reference intake of an average adult (8400 kJ/2000 kcal)

Calculated Nutrition

	per 100g	Per 1/2 Bar (26.5g)
Energy (kJ)	2105	558
Energy (kcal)	505	133
Fat (g)	26	6.8
of which saturates (g)	15.5	4.1
Carbohydrate (g)	59.5	16
of which sugars (g)	56	15
Fibre (g)	2.1	0.5
Protein (g)	7	1.9
Salt (g)	0.28	0.07

Front of Pack Nutrition



Product Description

Brand

Cadbury

Features

Suitable for vegetarians

Standardised Brand

Brand - Cadbury

Regulated Product Name

Milk chocolate with dried grapes (10%) and biscuits (6%).

Marketing

Company Name

Mondelez Ireland

Company Address

Malahide Road,
Coolock,
Dublin 5.

Brand Marketing

Cadbury Dairy Milk made in Ireland since 1933

Health & Lifestyle

Lifestyle

- Suitable for Vegetarians

Allergy Advice

Milk - Contains
Nuts - Contains
Wheat - Contains

Storage & Usage

Storage Type

Type

Ambient

Storage

Store in a cool, dry place

Brandbank Captured Pack Data

Pack Size

0.12lbs e

Numeric Size

Numeric Size - 0.12

Dimension

Shelf Height (in)	Shelf Width (in)	Shelf Depth (in)
1.93	4.45	0.51

(GS1 package measurement rules)

Pack Type

Type - Re-Closable Packaging

Weight

Gross Weight - 0.12

New Product Development

Final Product - Not NPD

Unit Merchandising

Height - 1.93
Width - 4.45
Depth - 0.51
Unit Stackable - Yes
Unit Stable - Yes
Merchandise Multiple Ways - No

Usage Count

Number of uses - Servings

2

Usage Other Text

2 x 26.5 g servings per bar

Customer Services

Manufacturers Address

Mondelez Ireland,
Malahide Road,
Coolock,
Dublin 5.

Return To

We are passionate about our great quality Cadbury products.
Not completely satisfied? Please contact us:
Mondelez Ireland,
Malahide Road,
Coolock,
Dublin 5.
Freephone 1-800 678708
www.cadbury.ie

Fax Number

1-800 678708

Web Address

www.cadbury.ie

Extended Data

Description Breakdown

Variant - Tiffin

