

Cadbury Dairy Milk Caramel Chocolate Bar 45g



EAN

7622300743703

Target market(s)

GB, IE

Components

Ingredients

Milk**

Sugar

Glucose Syrup

Cocoa Butter

Vegetable Fats (Palm, Shea)

Glucose-Fructose Syrup

Cocoa Mass

Whey Powder (from **Milk**)

Emulsifiers (E442, E471, E476)

Salt

Flavourings

Sodium Carbonates

**The equivalent of 426 ml of Fresh Liquid Milk in every 227 g of Milk Chocolate

Milk Chocolate: Milk Solids 20 % minimum, actual 23 %

Contains Vegetable Fats in addition to Cocoa Butter

Allergy Text

May contain Nuts, Wheat.

Nutrition

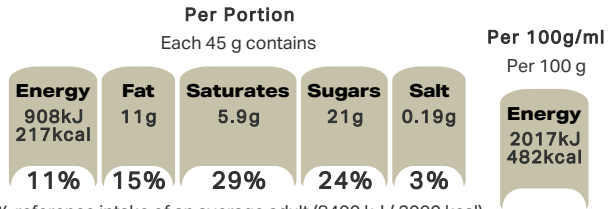
	Per 100 g	Per Bar (45 g)	*Reference Intakes
Energy	2017 kJ	908 kJ	8400 kJ /
	482 kcal	217 kcal	2000 kcal
Fat	23 g	11 g	70 g
of which Saturates	13 g	5.9 g	20 g
Carbohydrate	62 g	28 g	260 g
of which Sugars	48 g	21 g	90 g
Fibre	1.3 g	0.6 g	-
Protein	4.7 g	2.1 g	50 g
Salt	0.41 g	0.19 g	6 g

*% reference intake of an average adult (8400 kJ / 2000 kcal)

Calculated Nutrition

	per 100g	Per Bar (45 g)
Energy (kJ)	2017	908
Energy (kcal)	482	217
Fat (g)	23	11
of which saturates (g)	13	5.9
Carbohydrate (g)	62	28
of which sugars (g)	48	21
Fibre (g)	1.3	0.6
Protein (g)	4.7	2.1
Salt (g)	0.41	0.19

Front of Pack Nutrition



% reference intake of an average adult (8400 kJ / 2000 kcal)

Nutrition Other Text

% reference intake of an average adult (8400 kJ / 2000 kcal)

Reference Intake Statement

Reference Intake Statement - % reference intake of an average adult (8400 kJ / 2000 kcal)

Product Description

Alternative Description

Supplier Preferred Product Name - Cadbury Dairy Milk Caramel Chocolate Bar 45g

Brand

Cadbury

Features

100% Sustainably Sourced Cocoa
Suitable for vegetarians

Standardised Brand

Brand - Cadbury

Regulated Product Name

Milk chocolate with caramel centre (40 %).

Marketing

Company Name

Mondelez UK / Mondelez Ireland

Company Address

Mondelez UK,
PO Box 7008,
Birmingham,
B30 2PT.

Mondelez Ireland,
Malahide Road,
Coolock,
Dublin 5.

Product Marketing

Chunks of classic, creamy Cadbury Dairy Milk chocolate, encasing a smooth, golden caramel centre. It brings a velvety decadence to your everyday. Made with sustainably sourced cocoa. Vegetarian friendly.

Manufacturer Marketing

By Appointment to H.M. The Queen Cocoa and Chocolate Manufacturers Cadbury UK Ltd., Bournville.

Other Information

Made under licence from Cadbury UK Ltd.

Further Description

BeTreatwise.net

Cocoa Life
Partnering with Fairtrade Foundation
www.cocoalife.org

Health & Lifestyle

Lifestyle

- Suitable for Vegetarians

Allergy Advice

Milk - Contains
Nuts - May Contain
Wheat - May Contain

Storage & Usage

Storage Type

Type
Ambient

Storage

Store in a dry place. Protect from heat.

Brandbank Captured Pack Data

Pack Size

0.1lbs e

Numeric Size

Numeric Size - 0.1

Pack Type

Type - Wrap

Recycling Other Text

Usage Count

Number of uses - Servings

1

Usage Other Text

1x Bar = 1 Portion. 1 portion (45 g) per pack

Customer Services

Manufacturers Address

Mondelez UK,
PO Box 7008,
Birmingham,
B30 2PT.

Mondelez Ireland,
Malahide Road,
Coolock,
Dublin 5.

Return To

We are passionate about our great quality Cadbury products. Not completely satisfied? Please contact us:
Freephone 0800 818181 (UK only)

Mondelez UK,
PO Box 7008,
Birmingham,
B30 2PT.

Mondelez Ireland,
Freephone 1-800 678708
Malahide Road,
Coolock,
Dublin 5.
www.cadbury.co.uk

Telephone Helpline

0800 818181 (UK)
1-800 678708

Fax Number

Email Helpline

Web Address

www.cadbury.co.uk

Extended Data

SEO Metatag

Caramel, Cadbury Caramel, Dairy Milk Caramel, Chocolate Caramel, Is Cadburys Caramel Gluten Free, Dairy Milk, Milk Chocolate, Milk Chocolate With Caramel Centre

