

NielsenIQ Brandbank

Cadbury Flake Chocolate Bar 32g



EAN
50201013

Target market(s)
GB, IE

Components

Ingredients

Milk

Sugar

Cocoa Mass

Cocoa Butter

Whey Powder (from **Milk**)

Vegetable Fats (Palm, Shea)

Emulsifiers (E442, E476)

Flavourings

Milk Solids 14 % minimum

Cocoa Solids 25 % minimum

Contains Vegetable Fats in addition to Cocoa Butter

Nutrition

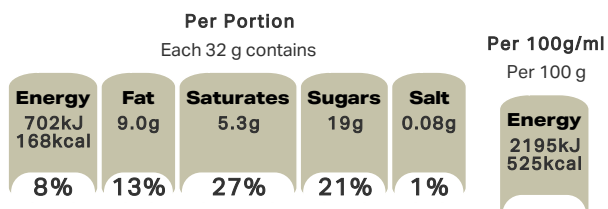
	Per 100 g	Per bar (32 g)	*Reference Intakes
Energy	2195 kJ	702 kJ	8400 kJ /
	525 kcal	168 kcal	2000 kcal
Fat	28 g	9.0 g	70 g
of which Saturates	17 g	5.3 g	20 g
Carbohydrate	59 g	19 g	260 g
of which Sugars	58 g	19 g	90 g
Fibre	2.4 g	0.8 g	-
Protein	7.3 g	2.4 g	50 g
Salt	0.26 g	0.08 g	6 g

*% reference intake of an average adult (8400 kJ / 2000 kcal)

Calculated Nutrition

	per 100g	Per bar (32 g)
Energy (kJ)	2195	702
Energy (kcal)	525	168
Fat (g)	28	9
of which saturates (g)	17	5.3
Carbohydrate (g)	59	19
of which sugars (g)	58	19
Fibre (g)	2.4	0.8
Protein (g)	7.3	2.4
Salt (g)	0.26	0.08

Front of Pack Nutrition



% reference intake of an average adult (8400 kJ / 2000 kcal)

Nutrition Other Text

% reference intake of an average adult (8400 kJ / 2000 kcal)

Reference Intake Statement

Reference Intake Statement - % reference intake of an average adult (8400 kJ / 2000 kcal)

Product Description

Alternative Description

Supplier Preferred Product Name - Cadbury Flake Chocolate Bar 32g

Brand

Cadbury

Features

Suitable for vegetarians

Standardised Brand

Brand - Cadbury

Regulated Product Name

The crumbliest, flakiest milk chocolate

Marketing

Company Name

Mondelez UK / Mondelez Ireland

Company Address

Mondelez UK,
PO Box 7008,
Birmingham,
B30 2PT.

Mondelez Ireland,
Malahide Road,
Coolock,
Dublin 5.

Third Party Logos

- Green Dot

Product Marketing

The way we make our Cadbury milk chocolate Flake so deliciously light and crumbly has been a guarded secret for years. Stick it in your ice cream for the Flake 99 classic, or eat it straight from the wrapper. Made with sustainably sourced cocoa. Vegetarian friendly.

Manufacturer Marketing

By Appointment to H.M. The Queen Cocoa and Chocolate Manufacturers Cadbury UK Ltd., Bournville.

Other Information

Made under licence from Cadbury UK Ltd.

Further Description

BeTreatwise.net

Get to know your treats

1 bar = 8 % of the RI* of kcal

*% reference intake of an average adult (8400 kJ / 2000 kcal)

Cocoa Life

Partnering with Fairtrade Foundation

www.cocoalife.org

Health & Lifestyle

Lifestyle

- Suitable for Vegetarians

Allergy Advice

Milk - Contains

Storage & Usage

Storage Type

Type

Ambient

Storage

Store in a dry place.
Protect from heat.

Brandbank Captured Pack Data

Pack Size

0.07lbs e

Numeric Size

Numeric Size - 0.07

Pack Type

Type - Wrap

Recycling Other Text

Usage Count

Number of uses - Servings

1

Usage Other Text

1x bar = Portion. 1 portion per pack

Customer Services

Manufacturers Address

Mondelez UK,
PO Box 7008,
Birmingham,
B30 2PT.

Mondelez Ireland,
Malahide Road,
Coolock,
Dublin 5.

Return To

We are passionate about our great quality Cadbury products. Not completely satisfied? Please contact us:

Freephone 0800 818181 (UK only).

Mondelez UK,
PO Box 7008,
Birmingham,
B30 2PT.

Mondelez Ireland,
Freephone 1-800 678708
Malahide Road,
Coolock,
Dublin 5.
www.cadbury.co.uk

Telephone Helpline

0800 818181 (UK)
1-800 678708

Fax Number

Email Helpline

Web Address

www.cadbury.co.uk

Extended Data

SEO Metatag

Flake, Cadbury Flake, Flake Chocolate, Flake Bar, Vegetarian Chocolate, Milk Chocolate, Chocolate Stick, Gluten Free Chocolate, Flake 99, Cadbury Flake Bar

