

# NielsenIQ Brandbank

## Cadbury Double Decker Chocolate Bar 54.5g



### EAN

7622210106421

### Target market(s)

GB, IE

## Components

### Ingredients

Sugar

Glucose Syrup

Glucose-Fructose Syrup

Vegetable Fats (Palm, Shea, Sunflower, Rapeseed)

**Wheat** Flour (with added Calcium, Iron, Niacin and Thiamin)

Skimmed **Milk** Powder

Cocoa Butter

Cocoa Mass

Whey Permeate Powder (from **Milk**)

Fat-Reduced Cocoa Powder

### **Milk** Fat

Whey Powder (from **Milk**)

Emulsifiers (E442, E471, **Soya** Lecithins)

Dried **Egg** White

Flavourings (from **Milk**)

Anti-Caking Agent (Calcium Carbonate)

Salt

**Barley** Malt Extract

Raising Agent (E503)

Milk Chocolate: Milk Solids 14 % minimum

Contains Vegetable Fats in addition to Cocoa Butter

### Allergy Text

**May contain Peanuts, Nuts.**

### Nutrition

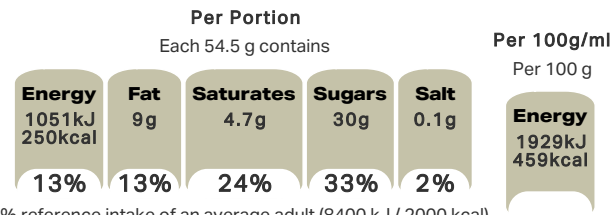
	Per 100 g:	Per Bar (54.5 g):
Energy	1929 kJ (459 kcal)	1051 kJ (250 kcal)
Fat	16 g	9.0 g
of which Saturates	8.6 g	4.7 g
Carbohydrate	73 g	40 g
of which Sugars	54 g	30 g

Fibre	1.5 g	0.8 g
Protein	3.7 g	2.0 g
Salt	0.19 g	0.10 g

#### Calculated Nutrition

	per 100g	Per Bar (54.5 g):
Energy (kJ)	1929	1051
Energy (kcal)	459	250
Fat (g)	16	9
of which saturates (g)	8.6	4.7
Carbohydrate (g)	73	40
of which sugars (g)	54	30
Fibre (g)	1.5	0.8
Protein (g)	3.7	2
Salt (g)	0.19	0.1

#### Front of Pack Nutrition



% reference intake of an average adult (8400 kJ / 2000 kcal)

#### Reference Intake Statement

Reference Intake Statement - % reference intake of an average adult (8400 kJ / 2000 kcal)

## Product Description

#### Brand

Cadbury

#### Features

100% Sustainably Sourced Cocoa  
Suitable for vegetarians

#### Standardised Brand

Brand - Cadbury

#### Regulated Product Name

Milk chocolate with smooth, chewy nougat (41 %) and crisp, crunchy cereal (9 %) filling.

## Marketing

### Company Name

Mondelez UK / Mondelez Ireland

### Company Address

Mondelez UK,  
PO Box 7008,  
Birmingham,  
B30 2PT.

Mondelez Ireland,  
Malahide Road,  
Coolock,  
Dublin 5.

### Third Party Logos

- Green Dot

### Manufacturer Marketing

By Appointment to H.M. The Queen Cocoa and Chocolate Manufacturers Cadbury UK Ltd., Bournville.

### Other Information

Made under licence from Cadbury UK Ltd.

### Further Description

BeTreatwise.net

Cocoa Life  
Partnering with Fairtrade Foundation  
[www.cocoalife.org](http://www.cocoalife.org)

## Health & Lifestyle

### Lifestyle

- Suitable for Vegetarians

### Allergy Advice

Barley - Contains  
Eggs - Contains  
Milk - Contains  
Nuts - May Contain  
Peanuts - May Contain  
Soya - Contains  
Wheat - Contains

## Storage & Usage

### Storage Type

Type
Ambient

### Storage

Store in a dry place. Protect from heat.

## Brandbank Captured Pack Data

### Pack Size

0.12lbs e

### Numeric Size

Numeric Size - 0.12

### Pack Type

Type - Wrap

### Usage Count

Number of uses - Servings

1

### Usage Other Text

1x bar = 1 Portion. 1 portion per pack

## Customer Services

### Manufacturers Address

Mondelez UK,  
PO Box 7008,  
Birmingham,  
B30 2PT.

Mondelez Ireland,  
Malahide Road,  
Coolock,  
Dublin 5.

### Return To

We are passionate about our great quality Cadbury products. Not completely satisfied? Please contact us:  
Freephone 0800 818181 (UK only).

Mondelez UK,  
PO Box 7008,  
Birmingham,  
B30 2PT.

Mondelez Ireland,  
Freephone 1-800 678708  
Malahide Road,  
Coolock,  
Dublin 5.  
[www.cadbury.co.uk](http://www.cadbury.co.uk)

### Telephone Helpline

0800 818181 (UK)  
1-800 678708

### Web Address

[www.cadbury.co.uk](http://www.cadbury.co.uk)

