

Knorr Cream of Chicken Soup 1 Pint/51g



EAN

8712566301935

Target market(s)

GB, IE

Components

Ingredients

WHEAT Flour

Palm Fat

Starch

Chicken Fat (7.8%) (Chicken Fat, Antioxidant (Extracts of Rosemary))

Iodised Salt

Flavourings (contain **EGG**)

Onion Powder† (3.9%)

Chicken Granules (2.5) [Chicken, Salt, Antioxidants (Butylated Hydroxyanisole, Propyl Gallate)]

Glucose Syrup

Sugar

Salt

Potassium Chloride

MILK Proteins

Herbs (Parsley†, Sage†, Rosemary†)

Spices (**CELERY** Seeds, Turmeric, Parsley Roots†)

Yeast Extract

†Sustainably grown

Allergy Text

May contain Mustard, Soy and other Cereals containing Gluten.

Nutrition

	Per 100ml prepared	Per portion**	%* per portion**
Energy	257 kJ / 62 kcal	646 kJ / 155 kcal	8 %
Fat	3.7 g	9.2 g	13 %
of which saturates	2.1 g	5.3 g	27 %
Carbohydrate	5.5 g	14 g	5 %
of which sugars	1.5 g	3.7 g	4 %
Fibre	<0.5 g	<0.5 g	
Protein	1.4 g	3.5 g	7 %
Salt	0.66 g	1.7 g	28 %

*% of Reference Intake of an average adult (8400 kJ /

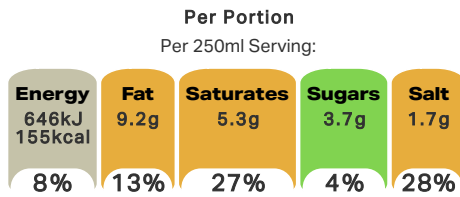
2000 kcal)

** 1 portion = 250ml (Pack contains 2 portions)

Calculated Nutrition

	Per 100ml prepared	Per portion
Energy (kJ)	257	646
Energy (kcal)	62	155
Fat (g)	3.7	9.2
of which saturates (g)	2.1	5.3
Carbohydrate (g)	5.5	14
of which sugars (g)	1.5	3.7
Fibre (g)	<0.5	<0.5
Protein (g)	1.4	3.5
Salt (g)	0.66	1.7

Front of Pack Nutrition



Energy per 100ml: 257kJ/62kcal

% of Reference Intake of an average adult (8400 kJ / 2000 kcal)

Nutrition Other Text

% of Reference Intake of an average adult (8400 kJ / 2000 kcal)

1 portion = 250ml (Pack contains 2 portions)

Reference Intake Statement

Reference Intake Statement - % of Reference Intake of an average adult (8400 kJ / 2000 kcal)

Product Description

Brand

Knorr

Features

Made with sustainably grown onions and herbs

No added MSG

Free from artificial colours and preservatives

Partnership for Sustainability

Standardised Brand

Brand - Knorr

Regulated Product Name

Cream of Chicken Soup Mix

Marketing

Company Name

Unilever Ireland / Unilever UK

Company Address

Unilever Ireland,
20 Riverwalk,
Citywest,
Dublin 24.

Unilever UK,
Freepost,
ADM3940,
London,
SW1A 1YR.

Brand Marketing

Our Knorr chefs have created this delicious soup with a selection of our finest ingredients. Staples of the kitchen cupboard, our packet soups are as tasty as they are versatile.

Our Knorr chefs believe that great tasting and high quality ingredients come from a conscious use of agricultural resources.

Other Information

Knorr, Unilever and the U device are registered trademarks

Further Description

To learn more, please visit www.knorr.ie.

Health & Lifestyle

Allergy Advice

Celery - Contains
Cereals Containing Gluten - May Contain
Eggs - Contains
Milk - Contains
Mustard - May Contain
Soya - May Contain
Wheat - Contains

Additives

Added MSG - Free From
Artificial Colours - Free From
Artificial Preservatives - Free From

Storage & Usage

Storage Type

Type

Ambient

Preparation and Usage

Preparation Method:

- 1) Empty contents of the sachet into saucepan. Gradually add 140ml (1/4 pt) cold milk and 430ml (3/4 pt) of cold water, stirring constantly.
- 2) Bring to boil, reduce heat, partially cover & simmer for 5 minutes, stirring occasionally.
- 3) Serve & enjoy!

Storage

Store in a cool, dry place.

Date Marking Type

- Best Before

Brandbank Captured Pack Data

Pack Size

0.11lbs

Numeric Size

Numeric Size - 0.11

Pack Type

Type - Sachet

Usage Count

Number of uses - Servings

2

Usage Other Text

1 portion = 250ml (Pack contains 2 portions)

Customer Services

Manufacturers Address

Unilever Ireland,
20 Riverwalk,
Citywest,
Dublin 24.

Unilever UK,
Freepost,
ADM3940,
London,
SW1A 1YR.

Return To

Unilever Ireland,
20 Riverwalk,
Citywest,
Dublin 24.

Unilever UK,
Freepost,
ADM3940,
London,
SW1A 1YR.

Any comments or questions?

(IE) Freephone 1800 70 80 50, (UK) Freephone 0800 731 1411

Mon-Fri 8am-6pm, UKIcare@unilever.com

www.knorr.ie / www.knorr.com/uk

Telephone Helpline

(IE) 1800 70 80 50
(UK) 0800 731 1411

Email Helpline

UKIcare@unilever.com

Web Address

www.knorr.ie
www.knorr.com/uk

Extended Data

Description Breakdown

Functional Name - Soup
Variant - Cream of Chicken



NUTRITION INFORMATION (Typical values)	Per 100ml prepared	Per portion**	%* per portion**
Energy	257 kJ/62 kcal	646 kJ/155 kcal	8 %
Fat	3.7 g	9.2 g	13 %
of which saturates	2.1 g	5.3 g	27 %
Carbohydrate	5.5 g	14 g	5 %
of which sugars	1.5 g	3.7 g	4 %
Fibre	< 0.5 g	< 0.5 g	
Protein	1.4 g	3.5 g	7 %
Salt	0.66 g	1.7 g	28 %

*% of Reference Intake of an average adult (8400 kJ / 2000 kcal)
 ** 1 portion = 250ml

CREAM OF CHICKEN SOUP MIX

Ingredients: **WHEAT** flour, palm fat, starch, chicken fat (7.8%) (chicken fat, antioxidant (extracts of rosemary)), iodised salt, flavourings (contain **EGG**), onion powder† (3.9%), chicken granules (2.5) [chicken, salt, antioxidants (butylated hydroxyanisole, propyl gallate)], glucose syrup, sugar, salt, potassium chloride, **MILK** proteins, herbs (parsley†, sage†, rosemary†), spices (**CELERY** seeds, turmeric, parsley roots†), yeast extract. May contain mustard, soy and other cereals containing gluten.

† Sustainably grown