

NielsenIQ Brandbank

Cadbury Dairy Milk Duo Chocolate Bars 54.4g



EAN

7622201461874

Target market(s)

GB, IE

Components

Ingredients

Milk**

Sugar

Cocoa Butter

Cocoa Mass

Vegetable Fats (Palm, Shea)

Emulsifiers (E442, E476)

Flavourings

**The equivalent of 426 ml of Fresh Liquid Milk in every 227 g of Milk Chocolate

Milk Solids 20 % minimum, actual 23 %

Cocoa Solids 20 % minimum

Contains Vegetable Fats in addition to Cocoa Butter

Allergy Text

May contain Nuts, Wheat.

Nutrition

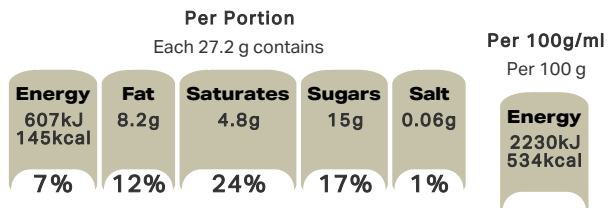
	Per 100 g	Per Bar (27.2 g)	*Reference Intakes
Energy	2230 kJ	607 kJ	8400 kJ /
	534 kcal	145 kcal	2000 kcal
Fat	30 g	8.2 g	70 g
of which Saturates	18 g	4.8 g	20 g
Carbohydrate	57 g	15 g	260 g
of which Sugars	56 g	15 g	90 g
Fibre	2.1 g	0.6 g	-
Protein	7.4 g	2.0 g	50 g
Salt	0.24 g	0.06 g	6 g

*% reference intake of an average adult (8400 kJ / 2000 kcal)

Calculated Nutrition

	per 100g	Per Bar (27.2 g)
Energy (kJ)	2230	607
Energy (kcal)	534	145
Fat (g)	30	8.2
of which saturates (g)	18	4.8
Carbohydrate (g)	57	15
of which sugars (g)	56	15
Fibre (g)	2.1	0.6
Protein (g)	7.4	2
Salt (g)	0.24	0.06

Front of Pack Nutrition



% reference intake of an average adult (8400 kJ / 2000 kcal)

Nutrition Other Text

% reference intake of an average adult (8400 kJ / 2000 kcal)

Reference Intake Statement

Reference Intake Statement - % reference intake of an average adult (8400 kJ / 2000 kcal)

Product Description

Brand

Cadbury

Features

The Classic Creamy Taste
Suitable for vegetarians

Standardised Brand

Brand - Cadbury

Regulated Product Name

Milk chocolate.

Marketing

Company Name

Mondelez UK / Mondelez Ireland

Company Address

Mondelez UK,
PO Box 7008,
Birmingham,
B30 2PT.

Mondelez Ireland,
Malahide Road,
Coolock,
Dublin 5.

Third Party Logos

- Green Dot

Manufacturer Marketing

By Appointment to H.M. The Queen Cocoa and Chocolate Manufacturers Cadbury UK Ltd., Bournville.

Other Information

Made under licence from Cadbury UK Ltd.

Further Description

BeTreatwise.net

Cocoa Life
Partnering with Fairtrade Foundation
www.cocoalife.org

Health & Lifestyle

Lifestyle

- Suitable for Vegetarians

Allergy Advice

Milk - Contains
Nuts - May Contain
Wheat - May Contain

Storage & Usage

Storage Type

Type

Ambient

Storage

Store in a dry place. Protect from heat.

Brandbank Captured Pack Data

Pack Size

0.12lbs e

Numeric Size

Numeric Size - 0.12

Dimension

Shelf Height (in)	Shelf Width (in)	Shelf Depth (in)
1.5	6.34	0.51

(GS1 package measurement rules)

Pack Type

Type - Wrap

Weight

Gross Weight - 0.12

New Product Development

Final Product - Not NPDP

Unit Merchandising

Height - 0.51

Width - 6.34

Depth - 1.5

Unit Stackable - No

Unit Stable - Yes

Merchandise Multiple Ways - No

Shelf Ready Pack

GTIN - 07622201461850

Height - 3.54

Width - 7.87

Depth - 8.62

Weight - 4.54

Unit Count - 32

Unit Height - 0.16

Unit Width - 0.04

Unit Depth - 0.31

Merchandise Multiple Ways - No

Prototype - No

Is Case - No

Case

GTIN - 07622201461850

Height - 3.54

Width - 7.87

Depth - 8.66

Weight - 4.63

Unit Count - 36

Prototype - No

Usage Count

Number of uses - Servings

2

Usage Other Text

1x Bar = 1 Portion. 2 x 27.2 g bars

Customer Services

Manufacturers Address

Mondelez UK,
PO Box 7008,
Birmingham,
B30 2PT.

Mondelez Ireland,
Malahide Road,
Coolock,
Dublin 5.

Return To

We are passionate about our great quality Cadbury products. Not completely satisfied? Please contact us:
Freephone 0800 818181 (UK only).

Mondelez UK,
PO Box 7008,
Birmingham,
B30 2PT.

Mondelez Ireland,
Freephone 1-800 678708
Malahide Road,
Coolock,
Dublin 5.
www.cadbury.co.uk

Telephone Helpline

0800 818181 (UK)
1-800 678708

Web Address

www.cadbury.co.uk

