

NielsenIQ Brandbank

Cadbury Wispa Duo Chocolate Bar 47.4g



EAN
7622201461232

Target market(s)
GB, IE

Components

Ingredients

Milk

Sugar

Cocoa Butter

Cocoa Mass

Vegetable Fats (Palm, Shea)

Whey Powder (from **Milk**)

Emulsifier (E442)

Flavourings

Milk Solids 14 % minimum

Cocoa Solids 25 % minimum

Contains Vegetable Fats in addition to Cocoa Butter

Allergy Text

May contain Nuts.

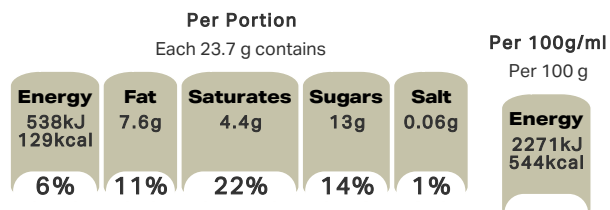
Nutrition

	Per 100 g:	Per Bar (23.7 g)
Energy	2271 kJ (544 kcal)	538 kJ (129 kcal)
Fat	32 g	7.6 g
of which Saturates	19 g	4.4 g
Carbohydrate	56 g	13 g
of which Sugars	55 g	13 g
Fibre	2.3 g	0.5 g
Protein	6.6 g	1.6 g
Salt	0.24 g	0.06 g

Calculated Nutrition

	per 100g	Per Bar (23.7 g)
Energy (kJ)	2271	538
Energy (kcal)	544	129
Fat (g)	32	7.6
of which saturates (g)	19	4.4
Carbohydrate (g)	56	13
of which sugars (g)	55	13
Fibre (g)	2.3	0.5
Protein (g)	6.6	1.6
Salt (g)	0.24	0.06

Front of Pack Nutrition



% reference intake of an average adult (8400 kJ / 2000 kcal)

Reference Intake Statement

Reference Intake Statement - % reference intake of an average adult (8400 kJ / 2000 kcal)

Product Description

Alternative Description

Supplier Preferred Product Name - Cadbury Wispa Duo Chocolate Bar 47.4g

Brand

Cadbury

Features

Suitable for vegetarians

Standardised Brand

Brand - Cadbury

Regulated Product Name

Textured milk chocolate bar.

Marketing

Company Name

Mondelez UK / Mondelez Ireland

Company Address

Mondelez UK,
PO Box 7008,
Birmingham,
B30 2PT.

Mondelez Ireland,
Malahide Road,
Coolock,
Dublin 5.

Product Marketing

Shhh. Don't disturb the rush of tiny bubbles, nestled in velvety Cadbury milk chocolate and coated in a luscious layer of yet more chocolate. It's what we imagine eating a chocolate cloud is like. Made with sustainably sourced cocoa. Vegetarian friendly.

Manufacturer Marketing

By Appointment to H.M. The Queen Cocoa and Chocolate Manufacturers Cadbury UK Ltd., Bournville.

Other Information

Made under licence from Cadbury UK Ltd.

Further Description

BeTreatwise.net
Get to know your treats
1 bar = 6 % of the RI* of kcal
*% reference intake of an average adult (8400 kJ / 2000 kcal)

Cocoa Life
Partnering with Fairtrade Foundation
www.cocoalife.org

Health & Lifestyle

Lifestyle

- Suitable for Vegetarians

Allergy Advice

Milk - Contains
Nuts - May Contain

Storage & Usage

Storage Type

Type

Ambient

Storage

Store in a dry place. Protect from heat.

Brandbank Captured Pack Data

Pack Size

0.1lbs ☺

Numeric Size

Numeric Size - 0.1

Dimension

Shelf Height (in)	Shelf Width (in)	Shelf Depth (in)
1.38	6.89	0.67

(GS1 package measurement rules)

Pack Type

Type - Wrap

Weight

Gross Weight - 0.11

New Product Development

Final Product - Not NPD

Unit Merchandising

Height - 0.67
Width - 6.89
Depth - 1.38
Unit Stackable - No
Unit Stable - Yes
Merchandise Multiple Ways - No

Shelf Ready Pack

GTIN - 07622201461218
Height - 3.07
Width - 7.68
Depth - 10.94
Weight - 3.62
Unit Count - 32
Unit Height - 0.16
Unit Width - 0.04
Unit Depth - 0.31
Merchandise Multiple Ways - No
Prototype - No
Is Case - No

Case

GTIN - 07622201461218
Height - 3.11
Width - 7.68
Depth - 10.94
Weight - 3.73
Unit Count - 32
Prototype - No

Recycling Other Text

Usage Count

Number of uses - Servings

2

Usage Other Text

1x Bar = 1 Portion. 2 x 23.7 g bars per pack. 2 portions per pack

Customer Services

Manufacturers Address

Mondelez UK,
PO Box 7008,
Birmingham,
B30 2PT.

Mondelez Ireland,
Malahide Road,
Coolock,
Dublin 5.

Return To

We are passionate about our great quality Cadbury products. Not completely satisfied? Please contact us:
Freephone 0800 818181 (UK only).

Mondelez UK,
PO Box 7008,
Birmingham,
B30 2PT.

Mondelez Ireland,
Freephone 1-800 678708
Malahide Road,
Coolock,
Dublin 5.
www.cadbury.co.uk

Telephone Helpline

0800 818181 (UK)
1-800 678708

Fax Number

Email Helpline

Web Address

www.cadbury.co.uk

Extended Data

SEO Metatag

Wispa, Wispa Chocolate, Wispa 4 Pack, Vegetarian Chocolate, Velvety Chocolate, Bubbly Chocolate, Milk Chocolate, Chocolate Bar, Wipsa Duo,



et

1x
= 1 Portion

538 kJ
129 kcal
6 %*

Per 100 g 2271 kJ / 544 kcal

