

# NielsenIQ Brandbank

---

## Coca-Cola 200ml NRG



**EAN**  
5449000021274

**Target market(s)**  
IE

## Components

### Ingredients

Carbonated Water  
Sugar  
Colour (Caramel E150d)  
Acid (Phosphoric Acid)  
Natural Flavourings including Caffeine

### Nutrition

	per 100ml:
Energy:	180kJ, 42kcal
Fat:	0g
(of which saturates	0g)
Carbohydrate	10.6g
(of which sugars:	10.6g)
Protein:	0g
Salt	0g

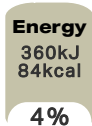
### Calculated Nutrition

	per 100ml
Energy (kJ)	180
Energy (kcal)	42
Fat (g)	0
of which saturates (g)	0
Carbohydrate (g)	10.6
of which sugars (g)	10.6
Protein (g)	0
Salt (g)	0

### Front of Pack Nutrition

#### Per Portion

200ml servings



100ml: 180kJ/42kcal

### HFSS Indicator

HFSS Indicator - HFSS

## Product Description

### Brand

Coca-Cola

### Standardised Brand

Brand - Coca-Cola

### Regulated Product Name

The No. 1 Cola Flavoured Soft Drink with Vegetable Extracts and Sweeteners

## Marketing

### Company Name

Coca-Cola HBC Northern Ireland Ltd. / Coca-Cola HBC Ireland Ltd.

### Company Address

Coca-Cola HBC Northern Ireland Ltd.,  
12 Lissue Road,  
Lisburn,  
BT28 2SZ.

Coca-Cola HBC Ireland Ltd.,  
Ballycoolin,  
Dublin 11.

### Third Party Logos

- Green Dot

## Health & Lifestyle

### Additives

Sweeteners - Contains

## Storage & Usage

### Storage Type

Type
Ambient

### Preparation and Usage

Best served chilled

### Storage

Store cool and dry.  
Best before end: See side of cap or bottle neck for date.

## Brandbank Captured Pack Data

### Pack Size

200ml e

### Numeric Size

Numeric Size - 200

### Recycling Info

Bottle - Certified as Recyclable

### Packaging Material Marks

Bottle - 70 - Clear Glass

### Pack Type

Type - Bottle

## Customer Supplied Pack Data

### Supplied Dimension

Shelf Height (mm) (In)	Shelf Width (mm) (In)	Shelf Depth (mm) (In)
6.89	2.17	2.17

### (GS1 package measurement rules)

#### Supplied Weight

Gross Weight (g) - 0.05

#### Supplied Unit Merchandising

Height - 6.89  
Width - 2.17  
Depth - 2.17  
Unit Stable - Yes  
Unit Stackable - Yes  
Merchandise Multiple Ways - Yes

#### Supplied Case

Height - 7.01  
Width - 8.86  
Depth - 13.27  
Weight - 18.72  
Unit Count - 24  
GTIN - 05449000021274

## Customer Services

### Manufacturers Address

Coca-Cola HBC Northern Ireland Ltd.,  
12 Lissue Road,  
Lisburn,  
BT28 2SZ.

Coca-Cola HBC Ireland Ltd.,  
Ballycoolin,  
Dublin 11.

### Return To

Coca-Cola HBC Northern Ireland Ltd.,  
12 Lissue Road,  
Lisburn,  
BT28 2SZ.

Coca-Cola HBC Ireland Ltd.,  
Ballycoolin,  
Dublin 11.

NI: 0-800-317318  
RO: 1-800-317318  
www.coca-colabottlers.com

### Telephone Helpline

NI: 0-800-317318  
RO: 1-800-317318

### Web Address

www.coca-colabottlers.com

## Extended Data

### Import Classification

Commodity Code - 22021000

### Packaging Weight

Bottle - Grams

140

### Hand Separable

Hand Separable - True

