

NielsenIQ Brandbank

Cadbury Dairy Milk Buttons Twisted 105g



EAN

7622201781767

Target market(s)

GB, IE

Components

Ingredients

Milk Chocolate (**Milk****, Sugar, Cocoa Butter, Cocoa Mass, Vegetable Fats (Palm, Shea), Emulsifiers (E442, E476), Flavourings)

White Chocolate (Sugar, Cocoa Butter, Skimmed **Milk Powder**, Whey Powder (from **Milk**), **Milk Fat**, Emulsifier (**Soya Lecithins**), Flavouring)

**The equivalent of 426 ml of Fresh Liquid Milk in every 227 g of Milk Chocolate

Cadbury Dairy Milk Milk Chocolate: Milk Solids 20% minimum, actual 23 %

Cocoa Solids 20% minimum

Contains Vegetable Fats in addition to Cocoa Butter

Nutrition

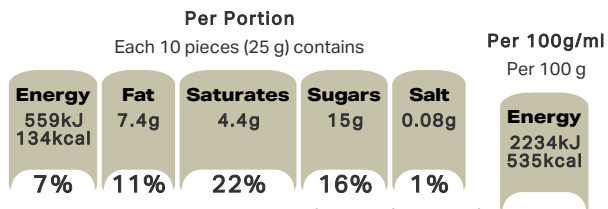
	Per 100 g	Per 10 pieces (25 g)	*Reference Intakes
Energy	2234 kJ	559 kJ	8400 kJ /
	535 kcal	134 kcal	2000 kcal
Fat	30 g	7.4 g	70 g
of which Saturates	17 g	4.4 g	20 g
Carbohydrate	60 g	15 g	260 g
of which Sugars	59 g	15 g	90 g
Fibre	1.1 g	0.3 g	-
Protein	6.1 g	1.5 g	50 g
Salt	0.32 g	0.08 g	6 g

*% reference intake of an average adult (8400 kJ / 2000 kcal)

Calculated Nutrition

	per 100g	Per 10 pieces (25 g)
Energy (kJ)	2234	559
Energy (kcal)	535	134
Fat (g)	30	7.4
of which saturates (g)	17	4.4
Carbohydrate (g)	60	15
of which sugars (g)	59	15
Fibre (g)	1.1	0.3
Protein (g)	6.1	1.5
Salt (g)	0.32	0.08

Front of Pack Nutrition



% reference intake of an average adult (8400 kJ / 2000 kcal)

Nutrition Other Text

% reference intake of an average adult (8400 kJ / 2000 kcal)

Reference Intake Statement

Reference Intake Statement - % reference intake of an average adult (8400 kJ / 2000 kcal)

Product Description

Alternative Description

Supplier Preferred Product Name - Cadbury Dairy Milk Twisted Milk & White Chocolate Buttons Bag 105g

Brand

Cadbury

Features

100% Sustainably Sourced Cocoa
Suitable for vegetarians

Standardised Brand

Brand - Cadbury

Regulated Product Name

Milk chocolate (50 %) and white chocolate (50 %).

Marketing

Company Name

Mondelez UK / Mondelez Ireland

Company Address

Mondelez UK,
PO Box 7008,
Birmingham,
B30 2PT.

Mondelez Ireland,
Malahide Road,
Coolock,
Dublin 5.

Third Party Logos

- Tidyman

Product Marketing

Torn between Cadbury's delicious milk or white chocolate? Then this swirly solution offers the best of both worlds. Giant Buttons combined with the classic, creamy taste of Cadbury Dairy Milk with a whirl of Cadbury white chocolate. It's half-and-half heaven.

Made with sustainably sourced cocoa. Vegetarian friendly.

Further Description

BeTreatwise.net

Cocoa Life
Partnering with Fairtrade Foundation
To improve the lives of cocoa farmers & our environment
By eating Cadbury, you've been encouraging environmental sustainability
Cocoa Life helps farmers get the most from their cocoa trees through environmentally friendly farming
WWW.COCOLIFE.ORG

Health & Lifestyle

Lifestyle

- Suitable for Vegetarians

Allergy Advice

Milk - Contains
Soya - Contains

Storage & Usage

Storage Type

Type

Ambient

Storage

Store in a dry place. Protect from heat.

Date Marking Type

- Best Before

Brandbank Captured Pack Data

Pack Size

0.23lbs e

Numeric Size

Numeric Size - 0.23

Pack Type

Type - Bag

Recycling Scheme

- OPRL

Recycling Other Text

Recycle with Bags at Large Supermarket - Don't recycle at home

Usage Count

Number of uses - Servings

4

Usage Other Text

1 portion = 10 pieces (25 g). Approximately 4 portions per pack

Customer Services

Manufacturers Address

Mondelez UK,
PO Box 7008,
Birmingham,
B30 2PT.

Mondelez Ireland,
Malahide Road,
Coolock,
Dublin 5.

Return To

We are passionate about our great quality Cadbury products. Not completely satisfied? Please contact us: Freephone 0800 818181 (UK only).

Mondelez UK,
PO Box 7008,
Birmingham,
B30 2PT.

Mondelez Ireland,
Freephone 1-800 678708
Malahide Road,
Coolock,
Dublin 5.
www.cadbury.co.uk

Telephone Helpline

0800 818181 (UK)
1-800 678708

Web Address

www.cadbury.co.uk

Extended Data

Description Breakdown

Variant - Buttons Twisted

SEO Metatag

Bournville Chocolate, Bournville Dark Chocolate, Cadbury Bournville, Bournville Buttons, Dark Chocolate, Vegetarian Chocolate, 36% Cocoa Chocolate, Dark Chocolate Buttons, Sweet Dark Chocolate, Dark Chocolate With A Low Percent

