

Cadbury Dairy Milk Salted Caramel Nibbles 120g



EAN

7622201714796

Target market(s)

GB, IE

Components

Ingredients

Milk**

Sugar

Glucose Syrup

Cocoa Mass

Cocoa Butter

Vegetable Fats (Palm, Shea)

Glucose-Fructose Syrup

Whey Powder (from Milk)

Emulsifier (E442)

Salt

Flavourings

Acidity Regulator (Sodium Carbonates)

**The equivalent of 426 ml of Fresh Liquid Milk in every 227 g of Milk Chocolate

Milk Chocolate: Milk Solids 20 % minimum, actual 23 %

Contains Vegetable Fats in addition to Cocoa Butter

Nutrition

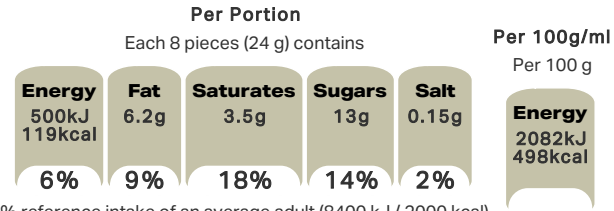
	Per 100 g	Per 8 pieces (24 g)	*Reference Intakes
Energy	2082 kJ	500 kJ	8400 kJ /
	498 kcal	119 kcal	2000 kcal
Fat	26 g	6.2 g	70 g
of which Saturates	15 g	3.5 g	20 g
Carbohydrate	59 g	14 g	260 g
of which Sugars	52 g	13 g	90 g
Fibre	1.6 g	0.4 g	-
Protein	5.7 g	1.4 g	50 g
Salt	0.62 g	0.15 g	6 g
*% reference intake of an average adult (8400 kJ / 2000 kcal)			

Calculated Nutrition

per 100g Per 8 pieces (24 g)

Energy (kJ)	2082	500
Energy (kcal)	498	119
Fat (g)	26	6.2
of which saturates (g)	15	3.5
Carbohydrate (g)	59	14
of which sugars (g)	52	13
Fibre (g)	1.6	0.4
Protein (g)	5.7	1.4
Salt (g)	0.62	0.15

Front of Pack Nutrition



% reference intake of an average adult (8400 kJ / 2000 kcal)

Nutrition Other Text

% reference intake of an average adult (8400 kJ / 2000 kcal)

Reference Intake Statement

Reference Intake Statement - % reference intake of an average adult (8400 kJ / 2000 kcal)

Product Description

Brand

Cadbury

Features

100% Sustainably Sourced Cocoa
Suitable for vegetarians

Standardised Brand

Brand - Cadbury

Regulated Product Name

Milk chocolates with a soft salted caramel centre (25 %).

Marketing

Company Name

Mondelez UK / Mondelez Ireland

Company Address

Mondelez UK,
PO Box 7008,
Birmingham,
B30 2PT.

Mondelez Ireland,
Malahide Road,
Coolock,
Dublin 5.

Third Party Logos

- Tidyman

Manufacturer Marketing

By Appointment to H.M. The Queen Cocoa and Chocolate Manufacturers Cadbury UK Ltd., Bournville.

Other Information

Made under licence from Cadbury UK Ltd.

Further Description

BeTreatwise.net

Cocoa Life
Partnering with Fairtrade Foundation
To improve the lives of cocoa farmers & our environment
By eating Cadbury, you've been encouraging environmental sustainability
Cocoa Life helps farmers get the most from their cocoa trees through environmentally friendly farming
WWW.COCOLIFE.ORG

Health & Lifestyle

Lifestyle

- Suitable for Vegetarians

Allergy Advice

Milk - Contains

Storage & Usage

Storage Type

Type

Ambient

Storage

Store in a dry place. Protect from heat.

Date Marking Type

- Best Before

Brandbank Captured Pack Data

Pack Size

0.26lbs e

Numeric Size

Numeric Size - 0.26

Pack Type

Type - Bag

Recycling Scheme

- OPRL

Recycling Other Text

Recycle with Bags at Large Supermarket - Don't recycle at home

Usage Count

Number of uses - Servings

5

Usage Other Text

1 portion = 24 g (8 pieces). 5 portions per bag

Customer Services

Manufacturers Address

Mondelez UK,
PO Box 7008,
Birmingham,
B30 2PT.

Mondelez Ireland,
Malahide Road,
Coolock,
Dublin 5.

Return To

We are passionate about our great quality Cadbury products. Not completely satisfied? Please contact us: Freephone 0800 818181 (UK only).

Mondelez UK,
PO Box 7008,
Birmingham,
B30 2PT.

Mondelez Ireland,
Freephone 1-800 678708
Malahide Road,
Coolock,
Dublin 5.
www.cadbury.co.uk

Telephone Helpline

0800 818181 (UK)
1-800 678708

Web Address

www.cadbury.co.uk

Extended Data

Description Breakdown

Variant - Salted Caramel Nibbles

