

## Knorr Cream of Mushroom Soup 1 Pint/42g



EAN

8712566301959

Target market(s)

GB, IE

### Components

#### Ingredients

Palm Fat

Starch

**WHEAT** Flour

Iodised Salt

Mushrooms† (4.8%)

Glucose Syrup

Yeast Extract

Thickener (Xanthan Gum)

Potassium Chloride

Salt

Flavourings

Mushroom Juice Concentrate (1%)

**MILK** Proteins

Onion Powder†

Stabiliser (Diphosphates)

Caramel Syrup

Maltodextrin

†Sustainably Grown

#### Allergy Text

May contain Celery, Egg, Mustard, Soy and other Cereals containing Gluten.

#### Nutrition

	Per 100ml prepared	Per portion**	%* per portion**
Energy	215 kJ/51 kcal	537 kJ/128 kcal	6 %
Fat	3.1 g	7.6 g	11 %
of which saturates	1.8 g	4.5 g	23 %
Carbohydrate	4.5 g	11 g	4 %
of which sugars	1.3 g	3.3 g	4 %
Fibre	< 0.5 g	< 0.5 g	
Protein	1.4 g	3.5 g	7 %
Salt	0.71 g	1.8 g	30 %

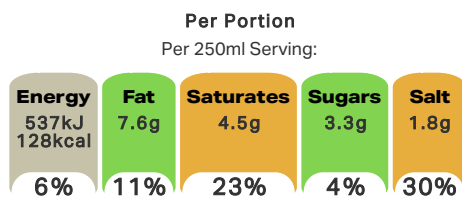
\*% of Reference Intake of an average adult (8400 kJ / 2000 kcal)

\*\* 1 portion = 250ml (Pack contains 2 portions)

#### Calculated Nutrition

	Per 100ml prepared	Per portion
Energy (kJ)	215	537
Energy (kcal)	51	128
Fat (g)	3.1	7.6
of which saturates (g)	1.8	4.5
Carbohydrate (g)	4.5	11
of which sugars (g)	1.3	3.3
Fibre (g)	<0.5	<0.5
Protein (g)	1.4	3.5
Salt (g)	0.71	1.8

#### Front of Pack Nutrition



Energy per 100ml: 215kJ/51kcal

% of Reference Intake of an average adult (8400 kJ / 2000 kcal)

#### Nutrition Other Text

% of Reference Intake of an average adult (8400 kJ / 2000 kcal)

1 portion = 250ml (Pack contains 2 portions)

#### Reference Intake Statement

Reference Intake Statement - % of Reference Intake of an average adult (8400 kJ / 2000 kcal)

## Product Description

#### Brand

Knorr

#### Features

Partnership for Sustainability

No added MSG

Free from artificial colours and preservatives

European Vegetarian Union

Suitable for Vegetarians

#### Standardised Brand

Brand - Knorr

#### Regulated Product Name

Cream of Mushroom Soup Mix

## Marketing

### Company Name

Unilever Ireland / Unilever UK

### Company Address

Unilever Ireland,  
20 Riverwalk,  
Citywest,  
Dublin 24.

Unilever UK,  
Freepost,  
ADM3940,  
London,  
SW1A 1YR.

### Third Party Logos

- V-Label (European Vegetarian Union)

### Brand Marketing

Our Knorr chefs have created this delicious soup with a selection of our finest ingredients. Staples of the kitchen cupboard, our Packet Soups are as tasty as they are versatile.

### Other Information

V-Label (European Vegetarian Union) - Vegetarian, V-LABEL.EU

Knorr, Unilever and the U device are registered trademarks

### Further Description

Our Knorr chefs believe that great tasting and high quality ingredients come from a conscious use of agricultural resources. To learn more, please visit [www.knorr.ie](http://www.knorr.ie).

## Health & Lifestyle

### Lifestyle

- Suitable for Vegetarians

### Allergy Advice

Celery - May Contain  
Cereals Containing Gluten - May Contain  
Eggs - May Contain  
Milk - Contains  
Mustard - May Contain  
Soya - May Contain  
Wheat - Contains

### Additives

Added MSG - Free From  
Artificial Colours - Free From  
Artificial Preservatives - Free From

## Storage & Usage

### Storage Type

#### Type

Ambient

### Preparation and Usage

Preparation Method:

- 1) Empty contents of the sachet into saucepan. Gradually add 140ml (1/4 pt) cold milk and 430ml (3/4 pt) of cold water, stirring constantly.
- 2) Bring to boil, reduce heat, partially cover & simmer for 5 minutes, stirring occasionally.
- 3) Serve & enjoy!

### Storage

Store in a cool, dry place.

### Date Marking Type

- Best Before

## Brandbank Captured Pack Data

### Pack Size

0.09lbs e

### Numeric Size

Numeric Size - 0.09

### Pack Type

Type - Sachet

### Usage Count

Number of uses - Servings

3

### Usage Other Text

1 portion = 250ml (Pack contains 3 portions)

## Customer Services

### Manufacturers Address

Unilever Ireland,  
20 Riverwalk,  
Citywest,  
Dublin 24.

Unilever UK,  
Freepost,  
ADM3940,  
London,  
SW1A 1YR.

### Return To

Unilever Ireland,  
20 Riverwalk,  
Citywest,  
Dublin 24.

Unilever UK,  
Freepost,  
ADM3940,  
London,  
SW1A 1YR.

Any comments or questions?

(IE) Freephone 1800 70 80 50, (UK) Freephone 0800 731 1411 Mon-Fri 8am-6pm, UKIcare@unilever.com  
www.knorr.ie / www.knorr.com/uk

### Telephone Helpline

(IE) 1800 70 80 50  
(UK) 0800 731 1411

### Email Helpline

UKIcare@unilever.com

### Web Address

www.knorr.ie  
www.knorr.com/uk

## Extended Data

### Description Breakdown

Functional Name - Soup  
Variant - Cream of Mushroom

**Preparation Method:**

- 1) Empty contents of the sachet into a saucepan. Gradually add 400ml (1 1/4 pt) cold milk and 400ml (1 1/4 pt) cold water, stirring constantly.
- 2) Bring to boil, reduce heat, partially cover & simmer for 5 minutes, stirring occasionally.
- 3) Serve & enjoy!

**Our Promise**

Our Knorr chefs have created this delicious soup with a selection of our finest ingredients. Staples of the British cupboard, our Packet Soups are as tasty as they are versatile.

Our Knorr chefs believe that great tasting and high quality ingredients come from a conscious use of organicated resources. To learn more, please visit [www.knorr.co.uk](http://www.knorr.co.uk).

**CREAM OF MUSHROOM SOUP MIX**

Ingredients: Palm fat, starch, WHEAT flour, iodised salt, mushrooms<sup>†</sup> (4.8%), glucose syrup, yeast extract, thickener (xanthan gum), potassium chloride, salt, flavourings, mushroom juice concentrate (1%), MILK proteins, onion powder<sup>†</sup>, stabiliser (diphosphates), caramel syrup, maltodextrin. May contain celery, egg, mustard, soy and other cereals containing gluten.

**NUTRITION INFORMATION (Typical values)**

	Per 100g	Per 100g	%* per portion**
Energy	215 kJ/51 kcal	537 kJ/128 kcal	6 %
Fat	3.1 g	7.6 g	11 %
of which saturates	1.8 g	4.5 g	23 %
Carbohydrate	4.5 g	11 g	4 %
of which sugars	1.3 g	3.3 g	4 %
Fibre	< 0.5 g	< 0.5 g	
Protein	1.4 g	3.5 g	7 %
Salt	0.71 g	1.8 g	30 %

\*% of Reference Intake of an average adult (8400 kJ / 2000 kcal)  
\*\* 1 portion = 250ml

42g e

**Knorr** SINCE 1838

**CREAM OF MUSHROOM SOUP**

**1**  
Pint

NUTRITION INFORMATION (Typical values)	Per 100ml prepared	Per portion**	%* per portion**
Energy	215 kJ/51 kcal	537 kJ/128 kcal	6 %
Fat	3.1 g	7.6 g	11 %
of which saturates	1.8 g	4.5 g	23 %
Carbohydrate	4.5 g	11 g	4 %
of which sugars	1.3 g	3.3 g	4 %
Fibre	< 0.5 g	< 0.5 g	
Protein	1.4 g	3.5 g	7 %
Salt	0.71 g	1.8 g	30 %

\*% of Reference Intake of an average adult (8400 kJ / 2000 kcal)  
\*\* 1 portion = 250ml

## CREAM OF MUSHROOM SOUP MIX

Ingredients: Palm fat, starch, **WHEAT** flour, iodised salt, mushrooms<sup>†</sup> (4.8%), glucose syrup, yeast extract, thickener (xanthan gum), potassium chloride, salt, flavourings, mushroom juice concentrate (1%), **MILK** proteins, onion powder<sup>†</sup>, stabiliser (diphosphates), caramel syrup, maltodextrin. May contain celery, egg, mustard, soy and other cereals containing gluten.

<sup>†</sup> Sustainably grown