

# NielsenIQ Brandbank

---

## Fanta Orange 8 x 330ml



EAN

5449000029423

Target market(s)

IE

# Components

## Ingredients

Carbonated Water  
Sugar  
Orange Juice from Concentrate 8%  
Acids (Citric Acid, Malic Acid)  
Stabilisers (Acacia Gum, Sucrose Acetate Isobutyrate, Glycerol Esters of Wood Rosins)  
Sweeteners (Acesulfame K, Aspartame)  
Acidity Regulator (Sodium Gluconate)  
Natural Orange Flavourings with other Natural Flavourings  
Preservative (Potassium Sorbate)  
Antioxidant (Ascorbic Acid)  
Colour (Carotenes)

## Nutrition

	Per: 100ml	Per: 330ml	(%*)
Energy:	81kJ/ 19kcal	267kJ/ 63kcal	(3%)
Fat:	0g	0g	(0%)
of which saturates:	0g	0g	(0%)
Carbohydrate:	4.5g	15g	(6%)
of which sugars:	4.5g	15g	(17%)
Protein:	0g	0g	(0%)
Salt:	0.01g	0.03g	(1%)

\*Reference intake of an average adult (8400kJ/2000kcal)

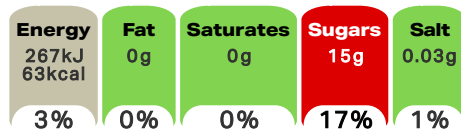
This multipack contains 8 x 330ml cans

## Calculated Nutrition

	per 100ml	Per: 330ml
Energy (kJ)	81	267
Energy (kcal)	19	63
Fat (g)	0	0
of which saturates (g)	0	0
Carbohydrate (g)	4.5	15
of which sugars (g)	4.5	15
Protein (g)	0	0
Salt (g)	0.01	0.03

## Front of Pack Nutrition

Per Portion  
330ml glass



100ml: 81kJ/19kcal

Reference intake of an average adult (8400kJ/2000kcal)

## Nutrition Other Text

Reference intake of an average adult (8400kJ/2000kcal)  
This multipack contains 8 x 330ml cans

## Reference Intake Statement

Reference Intake Statement - Reference intake of an average adult (8400kJ/2000kcal)

## Product Description

### Brand

Fanta

### Features

Made with orange juice

### Standardised Brand

Brand - Fanta

### Regulated Product Name

Sparkling Orange Fruit Drink with Sugar and Sweeteners

## Marketing

### Company Name

Coca-Cola HBC Northern Ireland Ltd / Coca-Cola HBC Ireland Ltd.

### Company Address

Coca-Cola HBC Northern Ireland Ltd,  
12 Lissue Road,  
Lisburn,  
BT28 2SZ.

Coca-Cola HBC Ireland Ltd.,  
Ballycoolin,  
Dublin 11.

### Third Party Logos

- FSC
- Green Dot

### Other Information

FSC - FSC® Mix, Board from responsible sources, FSC® C012938, [www.fsc.org](http://www.fsc.org)

©2020 The Coca-Cola Company.

## Health & Lifestyle

### Additives

Sweeteners - Contains

## Storage & Usage

### Storage Type

#### Type

Ambient

### Preparation and Usage

Best served chilled

### Storage

Best before: See base of can.  
Store cool and dry.

## Brandbank Captured Pack Data

### Pack Size

330ml ☺

### Numeric Size

Numeric Size - 330

### Recycling Info

Can - Certified as Recyclable

### Packaging Material Marks

Can - 41 - Aluminium

### Pack Type

Type - Sleeve

### Recycling Other Text

Recycle Us  
This Was Fun. Let's Do It Again

### Usage Count

Number of uses - Servings

8

### Usage Other Text

This multipack contains 8 x 330ml cans

## Customer Supplied Pack Data

### Supplied Dimension

Shelf Height (in)	Shelf Width (in)	Shelf Depth (in)
4.54	5.16	10.31

### (GS1 package measurement rules)

### Supplied Weight

Gross Weight (g) - 6.25

### Supplied Unit Merchandising

Height - 5.75  
Width - 4.62  
Depth - 9.21  
Unit Stable - Yes  
Unit Stackable - Yes  
Merchandise Multiple Ways - Yes

### Supplied Case

Height - 5.87  
Width - 9.25  
Depth - 13.82  
Weight - 19.07  
Unit Count - 3  
GTIN - 05449000206053

## Units

### Number of Units

Number of Units - 8

## Customer Services

### Manufacturers Address

Coca-Cola HBC Northern Ireland Ltd,  
12 Lissue Road,  
Lisburn,  
BT28 2SZ.

Coca-Cola HBC Ireland Ltd.,  
Ballycoolin,  
Dublin 11.

### Return To

Coca-Cola HBC Northern Ireland Ltd,  
12 Lissue Road,  
Lisburn,  
BT28 2SZ.

Coca-Cola HBC Ireland Ltd.,  
Ballycoolin,  
Dublin 11.

NI: 0-800-317318  
ROI: 1-800-317318  
[www.coca-colabottlers.com](http://www.coca-colabottlers.com)

### Telephone Helpline

NI: 0-800-317318  
ROI: 1-800-317318

### Web Address

[www.coca-colabottlers.com](http://www.coca-colabottlers.com)

## Extended Data

### Safety Warning

Contains a Source of Phenylalanine.

### Description Breakdown

Variant - Orange

### Import Classification

Commodity Code - 22021000

### Packaging Weight

Can - Grams

2835

